

RESEARCH

Open Access

Demographic history and population structure of *Anopheles pseudopunctipennis* in Argentina based on the mitochondrial *COI* gene

María J Dantur Juri^{1*}, Marta Moreno^{2,3,4}, Mónica J Prado Izaguirre⁵, Juan C Navarro⁵, Mario O Zaidenberg⁶, Walter R Almirón⁷, Guillermo L Claps¹ and Jan E Conn^{2,3}

Abstract

Background: *Anopheles pseudopunctipennis* is an important malaria vector in the Neotropical region and the only species involved in *Plasmodium* transmission in the Andean foothills. Its wide geographical distribution in America, high preference for biting humans and capacity to rest inside dwellings after feeding, are attributes contributing to its vector status. Previous reports have tried to elucidate its taxonomic status, distinguishing populations from North, Central and South America. In the present study we used a mitochondrial marker to examine the demographic history of *An. pseudopunctipennis* in northwestern Argentina.

Methods: Twelve localities were selected across 550 km of the distribution of this species in Argentina, including two near the Bolivian border and several in South Tucumán, for sampling. A fragment of the *cytochrome oxidase I* (*COI*) gene was sequenced and haplotype relationships were analyzed by a statistical parsimony network and a Neighbor-Joining (NJ) tree. Genetic differentiation was estimated with F_{ST} . Historical demographic processes were evaluated using diversity measures, neutrality tests and mismatch distribution.

Results: Forty-one haplotypes were identified, of which haplotype A was the most common and widely distributed. Neither the network nor the NJ tree showed any geographic differentiation between northern and southern populations. Haplotype diversities, Tajima's D_T and Fu & Li's F and D neutrality tests and mismatch distribution supported a scenario of Holocene demographic expansion.

Conclusion: The demographic pattern suggests that *An. pseudopunctipennis* has undergone a single colonization process, and the ancestral haplotype is shared by specimens from all localities, indicating mitochondrial gene flow. Genetic differentiation was minimal, observed only between one northern and one southern locality. The estimated time of the population expansion of this species was during the Holocene. These data suggest that regional vector control measures would be equally effective in both northern and southern localities sampled, but also that insecticide resistant genes may spread rapidly within this region.

Background

Malaria affects millions of people globally every year. In 2010, 216 million malaria cases were registered, 81% of them in Africa [1]. Approximately half of the world's population lives in areas with some risk of malaria transmission, and in America this number is 137 million people [1,2]. Differences in transmission intensity, the

presence of several competent mosquito vector species, multiple parasite species, human migration and anthropogenic environmental changes, are some of the factors that contribute to wide variation in malaria [2]. In addition, the presence of a suitable vector with characteristics such as endophily, anthropophily, endophagy, longevity, high titer of sporozoites and high effective local vector population size are essential for transmission to occur [3].

In the Americas, different malaria vectors are associated with distinctive eco-regions [4]. Specifically *Anopheles* (*Anopheles*) *pseudopunctipennis* Theobald is involved in Andean foothills and coastal area malaria transmission [4].

* Correspondence: juliadantur@yahoo.com.ar

¹Instituto Superior de Entomología "Dr. Abraham Willink", Facultad de Ciencias Naturales e Instituto Miguel Lillo, Universidad Nacional de Tucumán, Miguel Lillo 205, San Miguel de Tucumán 4000, Tucumán, Argentina
Full list of author information is available at the end of the article

The eco-regional classifications consider the anthropogenic environmental changes that can affect the distribution and abundance of the vector and, therefore, the intensity of *Plasmodium* transmission. For instance, the appearance of *An. pseudopunctipennis* on the dry coast of Peru was directly related to land use change from desert to irrigation for sugar cane and rice, creating suitable new species habitat [4].

An. pseudopunctipennis has an extensive distribution from the USA to northern Chile and northwestern Argentina, including the Caribbean Lesser Antilles, Trinidad and Tobago and Hispaniola Island [5-8]. Since the original description of this species by Theobald [9] until its redescription by Rueda *et al.* [10], several studies have attempted to evaluate its taxonomic status [11-15]. Estrada-Franco *et al.* [8,13,14] detected two different geographical populations (Mexican and South American) based on cross-mating experiments and fixed differences at two enzyme loci. Manguin *et al.* [15] using electrophoretic analyses, reported the presence of three *An. pseudopunctipennis* populations: one from the southern United States throughout Mexico and Guatemala; another extending from South America through Central America and Belize, both sharing an area of overlap in eastern Guatemala and southern Belize; and a third including only populations from the island of Grenada. Currently, *An. pseudopunctipennis* is considered to be a complex of at least 2 species [10]. However, there is not much information about demographic processes that could have lead, via allopatry, to speciation.

In Argentina, the historically wide geographical distribution of malaria appears to be reduced to the northwest, where it is still an important endemic parasitic disease [16-18]. Land use changes during the last century lead to a different level of malaria transmission that was indirectly linked to gradual changes in the yungas ecoregion, providing new breeding sites for the vector *An. pseudopunctipennis*. Until the 40's, the northern area of the yungas was a preserved rainforest, whereas in the southern area cultivation included sugar cane, citrus and soybean crops. However, after the 40's, the dynamics in the yungas were altered and the northern area began to exhibit major landscape modifications with severe forest exploitation, recurrent occurrence of fires and the increased pressure of farming [19] that required the presence of workers (a population naïve to malaria) in the area. These environmental alterations indirectly imply climatic changes, and, combined with human migration between southern Bolivia and northwestern Argentina since the second half of the 20th century, could explain the current distribution and abundance of *An. pseudopunctipennis* mosquitoes and the regional malaria endemicity [18].

The use of the *cytochrome oxidase I* gene (*COI*) for population demographic analyses of Anophelinae species

has been well-documented, i.e. Fairley *et al.* [20,21] in *Anopheles (Nyssorhynchus) aquasalis* Curry and *Anopheles (Anopheles) punctipennis* Say, and Mirabello & Conn [22] and Pedro & Sallum [23] for *Anopheles (Nyssorhynchus) darlingi* Root, among others. The effects of geographical barriers and latitude can show not only differentiation among populations but also possible barriers to gene flow [21]. For instance, populations of *An. darlingi* from Central and South America appear to be separate from Amazonia and southern Brazil specimens, with the southern ones considered more ancestral [22], and barriers to gene flow were also detected along the Amazon River and in southern Brazil [23].

In the present study, we analyzed the demographic history and population structure of *An. pseudopunctipennis* from two areas of the yungas ecoregion of Argentina by *COI* to elucidate the history of this species, as a first attempt to compare populations throughout its range in the Americas.

Methods

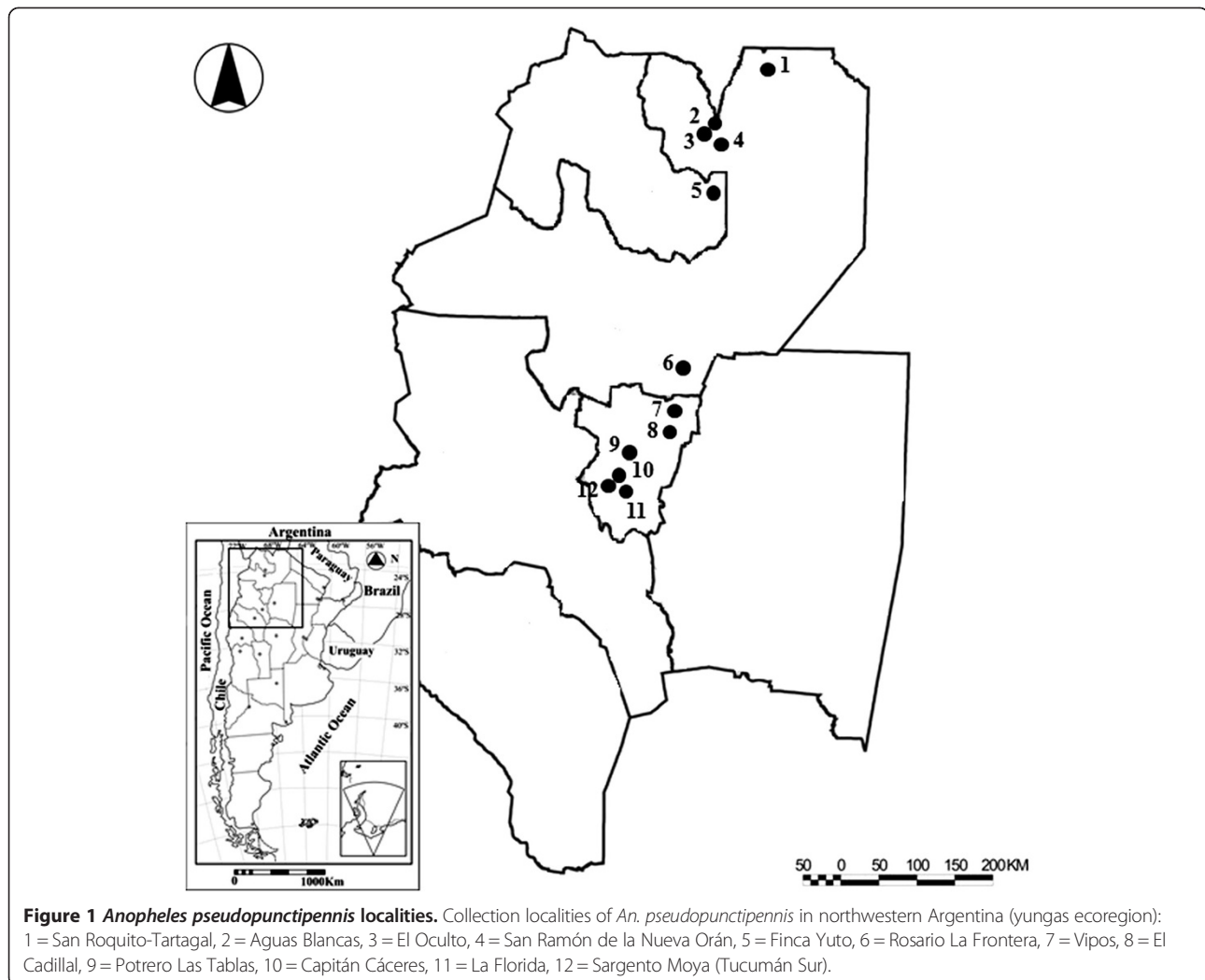
Mosquito collection

One hundred and sixty-five adult female *An. pseudopunctipennis* were collected from twelve localities in two areas, northern and southern yungas, situated in Salta, Jujuy and Tucumán provinces, northwestern Argentina (Figure 1, Table 1). These localities are included within the *An. pseudopunctipennis* geographical range reported by various authors [24-26]. The northern and southern yungas can be differentiated by vegetation and latitude [27,28]. The northern area is characterized by anthropic activity, including timber harvesting and modification of land for agriculture use. However, some relicts of native vegetation represented by “palo blanco” and “palo amarillo” trees (*Calycophyllum multiflorum* Griseb. (Castelo) and *Phyllostylon rhamnoides* (Pois.) Taubert), respectively, still remain. The southern area, namely the “tipa and pacará” forest, *Tipuana tipu* (Benth.) Kuntze and *Enterolobium contortisiliquum* (Vell.) Morong, respectively, has been modified by intensive sugar cane, soybean and citrus plantations, displacing more traditional and sustainable land use [27,28].

Collections were made by CDC light traps baited with carbon dioxide in 2005, 2007 and 2008 from 16:00 h-12:00 h in the yungas covering a latitudinal transect of ~550 km. Adult females were identified using the taxonomic key of Wilkerson & Strickman [29] and were deposited in the Instituto-Fundación Miguel Lillo Collection, Argentina (IMLA).

DNA extraction and sequencing

DNA extractions were carried out from whole individual mosquitoes following the standard DNeasy Blood & Tissue Handbook protocol (Qiagen, CA, USA). A 1200 bp



fragment of *COI* gene was amplified by polymerase chain reaction (PCR) using the UEA3 and UEA10 primer pairs [30]. Each PCR reaction was carried out using a Ready-To-Go-PCR Bead (GE Healthcare- Biosciences, NJ, USA) and performed on a PTC-200 thermal cycler (BioRad, Inc.). PCR products were purified with CentriSpin 40 columns (Princeton Separation, NJ, USA) and ExoSAP-IT (USB Corporation, Ohio, USA) and forward and reverse sequencing was performed at the Applied Genomic Technologies Core (Wadsworth Center, New York State Department of Health) on an ABI PRISM 3700 automated DNA sequencer.

Sequences for each individual sample were automatically aligned using Sequencher 3.0 (Gene Codes Corp, MI, USA) and corrected manually. The contig sequences were grouped together and aligned using MEGA version 3.1 [31]. In addition, the amino acid sequences were inferred to check for the presence of ambiguous stop codons that could suggest the presence of pseudogenes.

Few specimens were collected from the three most southern localities (10–12; Table 1) and the distances among them (7.45 – 9.9 km) are the lowest for all localities (range is 7.45 - 553.81 km). Therefore, these specimens were treated as a single population, TUCSUR (n = 7), for all analyses.

Phylogenetic relatedness and demographic history

Statistical parsimony networks were constructed to assess relatedness among the *An. pseudopunctipennis* *COI* haplotypes using TCS 1.12 software [32] with a 95% connection limit. Genetic variation within populations was assessed by haplotype (*h*), sequence (*K*) and nucleotide diversity (π) indices using Arlequin 3.11 [33].

Statistical neutrality tests were performed to detect departures of DNA sequence variability from the expectations of the neutral theory of evolution [34]. Tajima's *D* [35] is based on the difference between the estimates of the number of segregating sites and the average number of pairwise differences. The *D* and *F* tests proposed by Fu

Table 1 Collection localities (name and geographical coordinates), number of *An. pseudopunctipennis* specimens (N) and haplotype occurrences and frequencies, in northwestern Argentina

Sites	Localities	Latitude/longitude coordinates	N	Haplotypes	Collector/s
North Yungas					
1	San Roquito – Tartagal (SRT)	22°32'N, 63°49'W	20	A(9),B(1),B6(1),G(2),H(1),I(1),J(1), M(1),RR(1),V(1),Y(1)	MJDJ/EL/ACC
2	Agua Blancas (AB)	22°43'N, 64°21'W	20	A(13),B(1),B3(1),B5(1),C(1),H(1), O(1),P(1)	MJDJ/EL/NV/JCH
3	El Oculito (EO)	23°06'N; 64°31'W	20	A(14),B1(1),D(1),N(1),R(3)	MJDJ/EL/NV/JCH
4	San Ramón de la Nueva Orán (SRNO)	23°07'N, 64°19'W	19	A(15),B7(1),E(1),F(1),N(1)	MJDJ/EL/NV/JCH
5	Finca Yuto	23°63'N, 64°46'W	18	A(12),B(1),B2(1),H1(1),Q(1),Y(1)	MJDJ/EL/NV/JCH
South Yungas					
6	Rosario de la Frontera (RF)	25°48'N, 64°58'W	20	A(12),B(3),CH(1),LL(1),Q(1),RR(1), S(1),Z1(1)	MJDJ/GBG/CAVA
7	Vipos (VP)	26°30'N, 65°21'W	17	A(15),B4(1)	MJDJ/GBG/CAVA
8	El Cadillal (EC)	26°36'N, 65°12'W	20	A(16),L(1),V(1),α(2)	MJDJ/GBG/CAVA
9	Potrero Las Tablas (PT)	26°54'N, 65°27'W	4	A(1),W(1),X(1),Z(1)	MJDJ/GBG/CAVA
Tucumán Sur (TUCSUR)					
10	Capitán Cáceres (CC)	27°10'N, 65°36'W	3	A(4),B8(1),K(1),T(1),U(1)	MJDJ, LO, GQ
11	La Florida (LF)	27°13'N, 65°33'W	2		MJDJ, LO, GQ
12	Sargento Moya (SM)	27°13'N, 65°39'W	2		MJDJ, LO, GQ

MJDJ: Maria Julia Dantur Juri, EL: Enrique Laci, NV: Neri Vianconi, JCH: Juan Carlos Hitzamatzu, GBG: Guillermina Begoña Galante, CAVA: Cecilia Adriana Veggiani Aybar, LO: Luis Oroño and GQ: Gabriela Quintana.

& Li [36] require data from intraspecific molecular polymorphism. Fu's F_S test [37] is based on the haplotype frequency distribution and the R_2 statistic [38] is based on the difference between the number of singletons per sequence and the average number of nucleotide differences. DnaSP v 5 [39] was used for all these calculations.

A mismatch analysis for each partition (north–south) and overall was carried out using Arlequin 3.11. The analysis compares the frequency distribution of pairwise differences between haplotypes with that expected under a model of population expansion [40–42]. To quantify the smoothness of the mismatch distribution, the raggedness (r) statistic was calculated and its significance was assessed using 10,000 replicates [43].

Population genetic structure and gene flow

Genetic differentiation between populations of *An. pseudopunctipennis* was estimated by F_{ST} using Arlequin 3.11 [33]. The F_{ST} values were used as distance measures to create a NJ tree by DNAsp 4.50.3 [39]. Nei's G_{ST} values were calculated to estimate population differentiation based on differences in allele frequencies and Nei's N_m , the mean per generation estimate of the absolute number of migrants exchanged among populations [44]. The population structure was evaluated by analysis of molecular variance (AMOVA) in Arlequin 3.11 [33]. The hypothesis tested whether the northern and southern

yungas represented distinct groups. A spatial analysis of molecular variance (SAMOVA) was performed, which combined genetic differentiation and geographical distance to define groups of geographically homogeneous populations and those with maximum differentiation from each other [45]. In addition, isolation by distance (IBD) was tested using a nonparametric Mantel with the web-based computer program IBDWS v.3.16 [46].

Results

A fragment of 625-bp of the mitochondrial *COI* gene, from nucleotides 615–1269 was obtained. No stop codons were detected, indicating the mitochondrial origin of the DNA. All *COI* sequences are available at GenBank under accession numbers KC110039–KC110079. Forty-one haplotypes were identified, seven of which (A, B, H, Q, RR, V and Y) were shared between all northern and southern localities, accounting for 76.9% of the sequences. The dominant haplotype, A, represented 61.21% of the specimens, and was found in all localities (Table 1). Haplotype B was detected in four localities (SRT, AB, FY and RF) from the northern and southern areas. Unique haplotypes were distributed in all the localities.

Nucleotide and haplotype diversity values are depicted in Table 2. The highest haplotype diversity was in PT (1.0), followed by SRT (0.805). In general, the nucleotide diversity values were low and similar between populations

Table 2 Haplotypes and nucleotide diversity values and segregating sites of *An. pseudopunctipennis* in northwestern Argentina

Sites	Localities	H/N	Hd	Pi	K	S
North Yungas						
1	San Roquito- Tartagal	11/20	0.805 (0.090)	0.00179 (0.00034)	1.173	9
2	Aguas Blancas	8/20	0.589 (0.130)	0.00163 (0.00056)	1.068	9
3	El Oculito	5/20	0.505 (0.126)	0.00102 (0.00033)	0.668	5
4	San Ramón de la Nueva Orán	5/19	0.385 (0.139)	0.00080 (0.00034)	0.526	5
5	Finca Yuto	7/18	0.568 (0.138)	0.00147 (0.00045)	0.960	7
Overall North		28/97	0.579 (0.062)	0.00135 (0.00021)	0.887	27
South Yungas						
6	Rosario La Frontera	7/20	0.636 (0.116)	0.00194 (0.00081)	1.268	11
7	Vipos	3/17	0.227 (0.129)	0.00054 (0.00034)	0.352	3
8	El Cadillal	4/20	0.363 (0.131)	0.00104 (0.00042)	0.678	5
9	Potrero Las Tablas	4/4	1.000 (0.177)	0.00229 (0.00056)	1.500	3
10	Tucumán sur	4/7	0.714 (0.181)	0.00262 (0.00117)	1.714	6
Overall South		18/68	0.503 (0.076)	0.00142 (0.00035)	0.929	25
Total		41/165	0.547 (0.048)	0.00138 (0.00019)	0.904	44

H: Number of H: Haplotypes, N: Number of sequences obtained, Hd: Haplotype diversity (Standar Deviation), Pi: Nucleotide diversity (Standar Deviation), K: Average number of nucleotide differences, S: Number of segregating sites. Tucuman sur includes the following localities: Capitán Caceres, La Florida and Sargento Moya.

and groups, slightly higher and more heterogeneous in the south but insignificantly so. Pairwise F_{ST} values were used to create the NJ tree. The F_{ST} values ranged from 0–0.177, and there was only one significant value, indicating a moderate differentiation (0.036) between the FY (Jujuy Province) and EC (Tucumán Province) localities, which are 66 km apart.

Nei's G_{ST} and N_m values detected low pairwise genetic differentiation and moderate gene flow between the north and south. The highest value ($G_{ST} = 0.14210$) was between Potrero Las Tablas (PT) and Vipos (VP), both in the south, separated by 50.5 km. Estimates of gene flow (N_m) varied widely between populations, ranging from 1.51 to 614.50; the lowest was between Potrero Las Tablas (PT) and Vipos (VP) ($N_m \sim 1.51$). Negative values were related to small population sizes and lack of gene flow [44,47]. In our study, PT is represented by only four individuals, which might be providing a false inference and misinterpretation of results.

AMOVA findings were consistent with the apparent lack of structure within *An. pseudopunctipennis* in the yungas. Variation among the northern and southern groups was almost negligible ($\Phi_{SC} = -0.00429$). The populations differed significantly from each other ($\Phi_{CT} = 0.442$) and were responsible for 97.4% of the variance, although the value was non-significant. The remaining difference (3.54%) was explained by non-significant differentiation of haplotypes within populations ($\Phi_{ST} = 0.016$). SAMOVA did not show any geographical limit within populations, and $k = 3$ was the partition providing the highest significant F_{CT} (0.27), although it did not separate the northern-

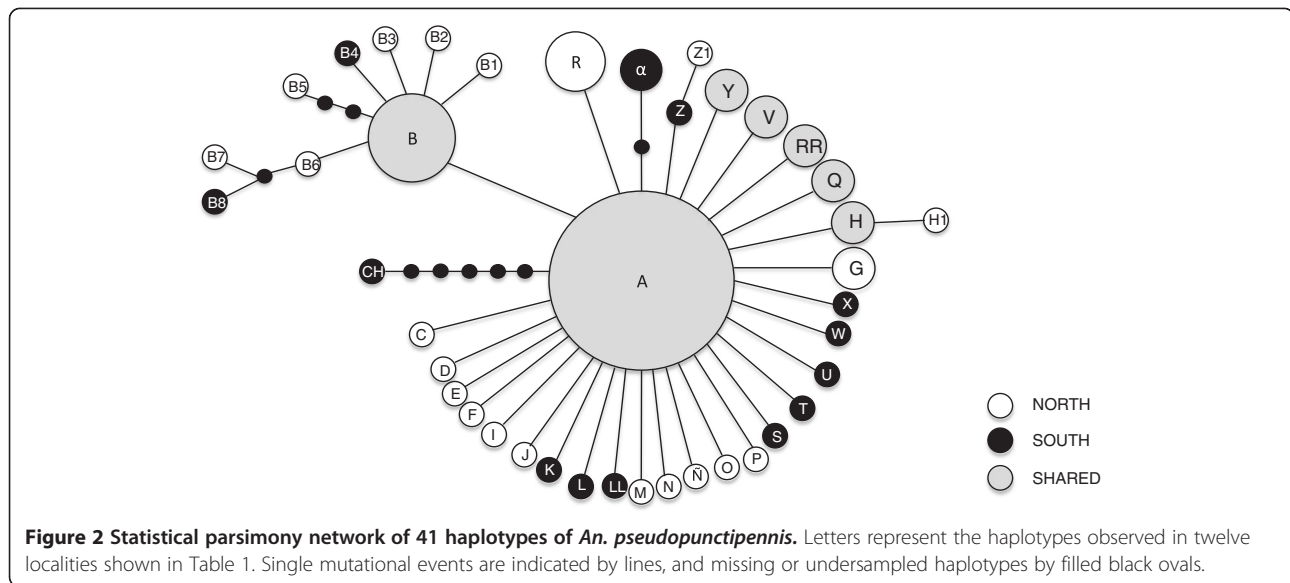
southern populations. Instead, TUCSUR (southern) and RF (northern) group separately from the other localities (grouping together). The Mantel test was not significant ($R = 0.0181$, $p = 0.385$) showing that there was no geographic association with the genetic differentiation.

The statistical parsimony network revealed a star-like topology (Figure 2). A was the most abundant haplotype and the only one found in all localities, and was designated as ancestral. The second most common haplotype (B) was distributed in the north and the south. Twenty-seven haplotypes were connected to the ancestral haplotype by one mutational step and 31 haplotypes were represented by a single individual. The maximum number of mutational steps observed in the network was six, between haplotypes A (found in all localities) and CH (restricted to locality 6, Rosario La Frontera).

Tajima's D and Fu & Li's F and D neutrality tests showed significant negative values in the northern and southern populations (Table 3) and there were also indications of a recent population expansion for the complete data set. On the other hand, Fu's F_S test estimated negative values in both areas and overall, although none were significant.

The mismatch distribution for the complete data set is presented in Figure 3. The population expansion model was not rejected in either case ($p = 0.058$, 0.126 and 0.088, respectively), which was consistent with a model of sudden expansion for each partition.

To calculate the time of population expansion, $t = \tau/2 \mu$ was used, where μ is the mutation rate per site per generation [22,40]. The mutation rate in *Drosophila* was used: 10^{-8} /site/year [48] and 10 generations/year [49]. The



analysis was done for all the samples, since there were no evidence for different populations. The estimate of τ was 0.924 giving an expansion estimated to 7, 392 years ago (95% CI, 32–15, 872), in the Holocene.

Discussion

The present study shows very little genetic structure of the malaria vector *Anopheles pseudopunctipennis* in the yungas ecoregion of Argentina based on one mitochondrial marker. Therefore, the hypothesis of genetic differentiation or restriction of gene flow between the northern

and southern yungas areas of Argentina is rejected, and there appears to be a single metapopulation in this region of northwestern Argentina. The AMOVA analysis did not reveal significant genetic differentiation when populations were grouped by distinct ecotype, the north and south divisions. Similarly, no boundaries were defined by SAMOVA for the complete data set. Previous findings in *An. pseudopunctipennis* in North, Central and South America showed deep population structure within this group using other molecular markers [8,13-15]. Our results suggest that *An. pseudopunctipennis* from the

Table 3 Indices and statistics used to measure *An. pseudopunctipennis* polymorphisms

Sites	Localities	H/N	D	D*	F*	Fu's	R ²
North Yungas							
1	San Roquito- Tartagal	11/20	-2.04083*	-2.39168	-2.65401*	-9.594	0.0583
2	Aguas Blancas	8/20	-1.99058*	-2.75174*	-2.93379*	-4.721	0.0830
3	El Oculito	5/20	-1.60863	-2.01240	-2.19139	-2.175	0.1055
4	San Ramón de la Nueva Orán	5/19	-1.96578*	-2.75581*	-2.92267*	-2.913	0.1094
5	Finca Yuto	7/18	-1.79140	-2.33361	-2.51578	-3.955	0.0851
	Overall North	28/97	-2.56303***	-5.84694**	-5.47713**	-41.203	0.0205
South Yungas							
6	Rosario La Frontera	7/20	-2.09572*	-2.96623**	-3.14728**	-2.682	0.1209
7	Vipos	3/17	-1.70573	-2.25481	-2.41419	-0.963	0.1709
8	El Cadillal	4/20	-1.58577	-1.21271	-1.51924	-0.882	0.1026
9	Potrero Las Tablas	4/4	-0.75445	-0.75445	-0.67466	-2.367	0.1443
10	Tucumán sur	4/7	-1.52412	-1.60880	-1.73234	-0.428	0.2259
	Overall South	18/68	-2.57256***	-5.36858**	-5.17929**	-18.985	0.0344
	Total	41/165	-2.66941***	-6.84292**	-6.08110**	-70.455	0.0153

H: Number of Haplotypes, N: Number of sequences obtained, D: Tajima's Statistic, D*: Fu and Li D* Statistic, F*: Fu and Li F* Statistic, Fu's: Fu's Fs Statistic, R²: Ramos-Onsins & Rozas, p < 0.05, **p < 0.02, ***p < 0.001.

Tucumán sur includes the following localities: Capitán Caceres, La Florida and Sargento Moya.

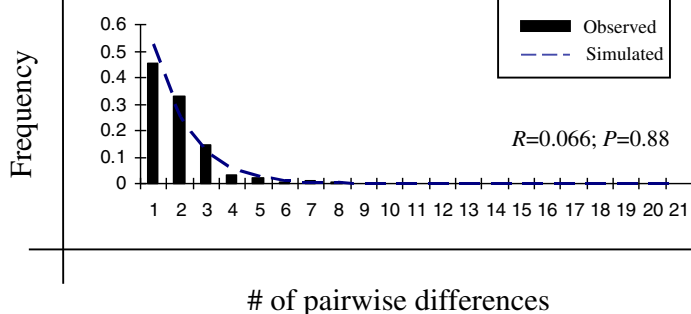


Figure 3 Observed and simulated mismatch frequency distributions under population expansion model for *Anopheles pseudopunctipennis*.

yungas is a unique population with *COI* mitochondrial gene flow among localities with similar demographic history. However, to test whether the current degradation of the natural ecosystem and landscape change is affecting the population further studies focused on markers with a faster mutation rate would be desirable [8,13-15].

When compared to other neotropical malaria vectors, the genetic differentiation between two populations of the malaria vector *An. albimanus* from Colombia showed similar results [50]; in spite of the deep population structure of the species, low genetic differentiation was observed between Caribbean and Pacific populations that correspond to different biogeographical regions. Loaiza *et al.* [51] studying *An. albimanus* populations from southern Central America founded significant genetic structure between populations from Costa Rica and western Panama compared with those from central-eastern Panama, whereas in our study, divergence within groups was shallow and statistically insignificant.

In addition, the low nucleotide diversity and the absence of isolation by distance observed for *An. pseudopunctipennis* is similar to results obtained for *An. darlingi* and *An. albimanus* by Mirabello & Conn [22], by De Merida *et al.* [52] and by Molina Cruz *et al.* [53], linking this to small effective migration rates and effective population size and/or genetic drift. The fact that in *An. pseudopunctipennis* nucleotide diversity was low, but not haplotype diversity, can be explained by rapid population growth from ancestral populations.

The Nm values between northern and southern populations showed not only high gene flow between them ($Nm > 1$) but also negative values ($Nm < 1$) related to low gene flow, where significant population differentiation could occur through genetic drift. The more ancestral and diverse haplotypes of *An. pseudopunctipennis* were observed in both the north and south. As reported by Mirabello & Conn [22], Molina-Cruz *et al.* [53] and Kambhampati & Rai [54], older populations have a

higher diversity; this seems to be the case for San Roquito-Tartagal (northern area) and Potrero Las Tablas and Tucumán Sur (southern area). On the basis of the presence of shared haplotypes between northern and southern populations, *An. pseudopunctipennis* has undergone an extensive expansion population process. In fact, the presence of a dominant haplotype represents an ancestral lineage, because older haplotypes have had more time to spread, leading to a higher frequency and geographic distribution [55]. Furthermore, mismatch distribution for the entire group exhibited a unimodal pattern, suggesting that demographic expansions occurred. Although Pleistocene population expansion has been detected in other Neotropical anophelines, such as *An. darlingi* (Amazonian region of Brazil) [22,56], *Anopheles marajoara* showed a more recent population expansion in Brazil, when it was compared to *An. darlingi* [57]. This difference may reflect the contraction and re-expansion cycles of Amazonian savanna, which created differences in the availability of habitats for breeding of these two species [58,59]. Unfortunately, few data from southern Argentina during the Holocene are available, although the Andean glaciations are correlated with the amount of available moisture more than a fall in temperature [59]. Immature stages of *An. pseudopunctipennis* are commonly found in riverside pools colonized by filamentous algae of the genus *Spirogyra* in the foothills of the mountainous Mesoamerica region [60-62]. Therefore, one hypothesis that could be tested is that climatic oscillations during the Pleistocene together with modifications in vegetation could favor the presence of breeding sites for this species during the Holocene.

The development of alternative breeding sites, or the increase of new suitable breeding sites because of the anthropic alterations of natural habitats, such as development of crops [60], may be a concern due to the possibility of colonization of new areas where the vector (or new vectors) was absent before. Thus, malaria vector surveillance

should be included in the strategies of disease control in the area.

Conclusion

This is the first report of the use of the mitochondrial *COI* gene to study the population demography of *An. pseudopunctipennis* in America, although the study was restricted to the Argentinian distribution. Results do not support the existence of northern and southern *An. pseudopunctipennis* population differentiation. Instead, this metapopulation seems to have undergone a single colonization process, without differentiation between northern and southern localities, with fairly high gene flow among them and evidence of a Holocene expansion.

In summary, this research reports the pattern of the genetic variability and gene flow among northwestern Argentinian localities of *An. pseudopunctipennis*. This study provides important baseline data that suggest that similar vector control measures should work in both the north and south, and also, if insecticide resistance evolves, it would likely spread fairly rapidly in this area.

Competing interests

The authors declare that they have no competing interests.

Authors' contributions

MJDJ is a Researcher of the CONICET (Consejo Nacional de Investigaciones Científicas Técnicas); this research was part of her PhD thesis. She carried out the mosquito's field collections, identified the species and prepared the specimens to be analyzed by molecular techniques. MM participated by performing demographic analysis and writing the manuscript. MJPI and JCN participated in laboratory work (DNA extraction and PCR). MOZ helped with the mosquito collections. Molecular and genetic analyses were performed in laboratory of JEC. WRA, GLC, JCN and JEC critically reviewed the manuscript. All authors read and approved the final version of the manuscript.

Acknowledgements

We want to thank Federico Vianconi, Neri Vianconi, Enrique Laci and Juan Carlos Hitzamatzu (Coordinación Nacional de Control de Vectores, Ministerio de Salud de Argentina) for their invaluable help in the mosquito collections. We also thank María Gabriela Rangel and Camila Hernández (Laboratorio de Biología de Vectores, Instituto de Zoología Tropical, Universidad Central de Venezuela) for their collaboration in the first molecular studies. We appreciate the comments and help of PhD Lina Gutiérrez Builes and PhD José Loaiza about the manuscript. This work was supported by Grants (PICT 01–04347; PICT 02–12605) from Agencia Nacional de Promoción Científica y Tecnológica (FONCyT), Consejo Nacional de Investigaciones Científicas Técnicas (CONICET), Consejo de Investigaciones de la Universidad Nacional de Tucumán (CIUNT), Coordinación Nacional de Control de Vectores (Ministerio de Salud de la Nación), National Institutes of Health (USA) grant R01 AI54139 to JEC and by the Fulbright-Bunge & Born grant to MJDJ.

Author details

¹Instituto Superior de Entomología "Dr. Abraham Willink", Facultad de Ciencias Naturales e Instituto Miguel Lillo, Universidad Nacional de Tucumán, Miguel Lillo 205, San Miguel de Tucumán 4000, Tucumán, Argentina. ²Wadsworth Center, Griffin Laboratory, New York State Department of Health, Albany, NY 12159, USA. ³Department of Biomedical Sciences, School of Public Health, State University of New York-Albany, Albany, NY 12222, USA. ⁴Current address: Division of Infectious Diseases, School of Medicine, University of California, San Diego, George Palade Labs, School of Medicine, 9500 Gilman Drive, MC 0741, La Jolla, CA 92093, USA. ⁵Laboratorio de Biología de Vectores, Instituto de Zoología Tropical, Universidad Central de

Venezuela, Av. Paseo Los Ilustres, Los Chaguaramos Apartado 48058, Caracas 1041-A, Venezuela. ⁶Coordinación Nacional de Control de Vectores, Ministerio de Salud de la Nación, Güemes 125, 4400 Salta, Argentina. ⁷Centro de Investigaciones Entomológicas de Córdoba, Facultad de Ciencias Físicas, Exactas y Naturales, Universidad Nacional de Córdoba, Av. Vélez Sarsfield 1611, 5016 Córdoba, Argentina.

Received: 28 May 2014 Accepted: 26 August 2014

Published: 4 September 2014

References

1. World Health Organization: *Roll Back Malaria: The Global Malaria Action Plan: for a Malaria Free-World. Part III: Regional Strategies*. Geneva, Switzerland: World Health Organization; 2008.
2. World Health Organization: *World Malaria Report 2008*. Geneva: WHO Global Malaria Programme. WHO Library Cataloguing-in-Publication Data; 2008.
3. Botero D, Restrepo M: **Malaria (Paludismo)**. In *Parasitosis Humanas*. Edited by Corporación para Investigaciones Biológicas (CIB). Medellín, Colombia: 1994:149–190.
4. Rubio-Palis Y, Zimmerman RH: **Ecoregional classification of malaria vectors in the neotropics**. *Med Entomol* 1997, **34**:499–510.
5. Fleming G: *Biology and Ecology of Malaria Vectors in the Americas*. Washington, DC: Pan American Health Organization; 1986.
6. Darsie R, López G: **Studies of colonization of El Salvador strains of *Anopheles pseudopunctipennis pseudopunctipennis***. *Mosq News* 1980, **40**:88–199.
7. Molez JF, Desenfant P, Pajot F, Jacques JR, Duverseau Y, Saint-Jean Y: **Le paludisme en Haïti 2. Presence d'*Anopheles (A) pseudopunctipennis* Theobald 1901. Première mise en évidence sur l'île d' Hispaniola**. *Cah ORSTOM Ser Entomol Med Parasitol* 1987, **25**:75–78.
8. Estrada-Franco JG, Ma MC, Gwadz RW, Sakai R, Lanzaro GC, Laughinghouse A, Galván-Sánchez C, Céspedes JL, Vargas-Sagarnaga R: **Evidence through crossmating experiments of a species complex in *Anopheles pseudopunctipennis sensu lato*: a primary malaria vector of the american continent**. *Am J Trop Med Hyg* 1993, **49**:746–755.
9. Theobald FV: *A Monograph of the Culicidae or Mosquitoes*, Volume 2. London, England: British Museum Natural History; 1901.
10. Rueda LM, Peyton EL, Manguin S: ***Anopheles (Anopheles) pseudopunctipennis* Theobald (Diptera: Culicidae): Neotype designation and description**. *J Med Entomol* 2004, **41**:12–22.
11. Aitken THG: **Studies on the anopheline complex of Western America**. *Univ Calif Publ Entomol* 1945, **7**:273–364.
12. Knight KL, Stone A: *A catalog of the Mosquitoes of the World (Diptera: Culicidae)*. Volume 6. 2nd edition. Lanham, MD: Entomol Soc Am, The Thomas Say Foundation; 1977.
13. Estrada-Franco JG, Ma MC, Lanzaro GC, Gwadz RW, Galván-Sánchez C, Céspedes JL, Vargas-Sagarnaga R, Rodríguez R: **Evidencia genética de un complejo de especie en *Anopheles pseudopunctipennis pseudopunctipennis***. *Bol Oficina Sanit Panam* 1992, **113**:297–299.
14. Estrada-Franco JG, Lanzaro GC, Ma MC, Walter-Abbey A, Romans P, Galván-Sánchez C, Céspedes JL, Vargas-Sagarnaga R, Laughinghouse A, Columbus I, Gwadz RW: **Characterization of *Anopheles pseudopunctipennis sensu lato* from three countries of Neotropical America from variation in allozymes and ribosomal DNA**. *Am J Trop Med Hyg* 1993, **49**:735–745.
15. Manguin S, Roberts DR, Peyton EL, Fernández-Salas I, Barreto M, Fernández Loayza R, Elgueta Spinola R, Martínez Granaou R, Rodríguez MR: **Biochemical systematics and population genetic structure of *Anopheles pseudopunctipennis*, vector of malaria in Central and South America**. *Am J Trop Med Hyg* 1995, **53**:362–377.
16. Ministerio de Salud de la Nación (Argentina): *Boletín Epidemiológico (1997) Dirección Nacional de Epidemiología*. Argentina: Departamento de Vigilancia Epidemiológica; 1997.
17. Curto SI, Carbajo AE, Boffi R: **Aplicación de Sistemas de Información Geográfica en Epidemiología: caso de estudio: malaria en la Argentina (1902–2000)**. *GAEA, Sociedad Argentina de Estudios Geográficos* 2003, **1-10**:239–248.
18. Dantur Juri MJ, Zaidenberg M, Claps GL, Santana M, Almiron WR: **Malaria transmission in two localities in Northwestern Argentina**. *Malar J* 2009, **8**:18.
19. Brown AD: **Las selvas pedemontanas de las Yungas. Manejo sustentable y conservación de la biodiversidad de un ecosistema prioritario del noroeste argentino**. In *Selvas Pedemontanas de las Yungas. Historia Natural*,

- Ecología y Manejo de un Ecosistema en Peligro Investigación, Conservación y Desarrollo en las Selvas Subtropicales de Montaña*. Edited by Brown AD, Blendinger PG, Lomáscolo T, García Bes P. San Miguel de Tucumán: Fundación Proyungas. Ediciones del Subtrópico; 2009:13–31.
20. Fairley TL, Renaud TM, Conn JE: **Effects of local geographical barriers and latitude on population structure in *Anopheles punctipennis* (Diptera: Culicidae)**. *J Med Entomol* 2000, **37**:754–760.
 21. Fairley TL, Póvoa MM, Conn JE: **Evaluation of the Amazon River delta as a barrier to gene flow for the regional malaria vector, *Anopheles aquasalis* (Diptera: Culicidae) in northeastern Brazil**. *J Med Entomol* 2002, **39**:861–869.
 22. Mirabello L, Conn JE: **Molecular populations genetics of malaria vector *Anopheles darlingi* in Central and South America**. *Heredity* 2006, **96**:311–321.
 23. Pedro M, Sallum MAM: **Spatial expansion and population structure of the neotropical malaria vector, *Anopheles darlingi* (Diptera: Culicidae)**. *Biol J Linn Soc* 2009, **97**:854–866.
 24. Bejarano JFR: **Áreas palúdicas de la República Argentina**. *Primeras Jornadas Entomopidemiológicas Argentinas* 1953, **1**:275–304.
 25. Bejarano JFR: **Distribución geográfica de "Anophelini" de la República Argentina**. *Rev Sanit Militar Arg* 1957, **56**:307–348.
 26. Carcavallo RU, Martínez A: **Paludismo y sus transmisores**. *Investigaciones Científicas de las Fuerzas Armadas Argentinas*. *Com Cient Entomopid República Argentina* 1968, **13**:145–186.
 27. Prado DE: **Selva Pedemontana: Contexto Regional y lista Florística de un Ecosistema en Peligro**. In *Investigación, Conservación y Desarrollo en las Selvas Subtropicales de Montaña*. Edited by Brown AD, Grau HR. San Miguel de Tucumán: Laboratorio de Investigaciones Ecológicas de las Yungas, Universidad Nacional de Tucumán; 1995:19–52.
 28. Brown AD: **Las Selvas de Montaña del Noroeste de Argentina: Problemas Ambientales e Importancia de su Conservación**. In *Investigación, Conservación y Desarrollo en las Selvas Subtropicales de Montaña*. Edited by Brown AD, Grau HR. San Miguel de Tucumán: Laboratorio de Investigaciones Ecológicas de las Yungas, Universidad Nacional de Tucumán; 1995:9–18.
 29. Wilkerson RC, Strickman D: **Illustrated key to the female Anophelinae mosquitoes of Central America and Mexico**. *J Am Mosq Control Assoc* 1990, **6**:7–34.
 30. Lunt DH, Zheng DX, Szymura JM, Hewitt GM: **The insect cytochrome oxidase I (COI) gene: evolutionary patterns and conserved primers for phylogenetic studies**. *Insect Mol Biol* 1996, **5**:153–165.
 31. Kumar S, Tamura K, Nei M: **MEGA3: integrated software for molecular evolutionary genetics analysis and sequence alignment**. *Bioinformatics* 2004, **5**:150–163.
 32. Clement M, Posada D, Crandall KA: **TCS: a computer program to estimate gene genealogies**. *Mol Ecol* 2000, **9**:1657–1660.38.
 33. Schneider S, Roessli D, Excoffier L: **ARLEQUIN ver 2.000: a Software for Population Genetics Data Analysis**. Switzerland: Genetics and Biometry Laboratory, University of Geneva; 2000.
 34. Kimura M: **Evolutionary rate at the molecular level**. *Nature* 1968, **217**:624–626.
 35. Tajima F: **Statistical method for testing the neutral mutation hypothesis by DNA polymorphisms**. *Genetics* 1989, **123**:585–595.
 36. Fu YX, Li WH: **Statistical tests of neutrality of mutations**. *Genetics* 1993, **133**:693–709.
 37. Fu YX: **Statistical tests of neutrality of mutations against population growth, hitchhiking and background selection**. *Genetics* 1997, **147**:915–925.
 38. Ramos-Onsins SE, Rozas J: **Statistical properties of new neutrality tests against population growth**. *Mol Biol Evol* 2002, **19**:2092–2100.
 39. Librado P, Rozas J: **DnaSP v. 5: a software for comprehensive analysis of DNA polymorphism data**. *Bioinformatics* 2009, **25**:1451–1452.
 40. Slatkin M, Hudson RR: **Pairwise comparisons of mitochondrial DNA sequences in stable and exponentially growing populations**. *Genetics* 1991, **129**:555–562.
 41. Rogers AR, Harpending H: **Population growth makes waves in the distribution of pairwise genetic differences**. *Mol Biol Evol* 1992, **9**:552–569.
 42. Rogers AR: **Genetic evidence for a Pleistocene population explosion**. *Evolution* 1995, **49**:608–615.
 43. Harpending HC, Sherry ST, Rogers AR, Stoneking M: **The genetic structure of ancient human populations**. *Curr Anthropol* 1993, **34**:483–496.
 44. Nei M: **Analysis of gene diversity in subdivided populations**. *Proc Natl Acad Sci U S A* 1973, **70**:3321–3323.
 45. Dupanloup I, Schneider S, Excoffier L: **A simulated annealing approach to define the genetic structure of populations**. *Mol Ecol* 2002, **11**:571–2,581.
 46. Jensen JL, Bohonak AJ, Kelley ST: **Isolation by distance, web service**. *BMC Genet* 2005, **6**:13.v.3.16. <http://ibdws.sdsu.edu/>.
 47. Nei M: *Molecular Population Genetics and Evolution*. North-Holland: North Holland Publishing Company; 1975.
 48. Powell JR, Cacccone A, Amato GD, Yoon C: **Rate of nucleotide substitution in *Drosophila* mitochondrial DNA and nuclear DNA are similar**. *Proc Natl Acad Sci U S A* 1986, **83**:9090–9093.
 49. Walton C, Handley JM, Willoughby TL, Collins FH, Harbach RE, Baimai V, Butlin RK: **Population structure and population history of *Anopheles dirus* mosquitoes in southeast Asia**. *Mol Biol Evol* 2000, **17**:962–974.
 50. Gutiérrez LA, Naranjo NJ, Cienfuegos AV, Muskus CE, Luckhart S, Conn JE, Correa MM: **Population structure analyses and demographic history of the malaria vector *Anopheles albimanus* from the Caribbean and the Pacific regions of Colombia**. *Malar J* 2009, **8**:259.
 51. Loaiza JR, Scott ME, Bermingham E, Rovira J, Conn JE: **Evidence for Pleistocene population divergence and expansion of *Anopheles albimanus* in Southern Central America**. *Am J Trop Med Hyg* 2010, **82**:156–164.
 52. De Mérida AMP, Palmieri M, Yurrita MM, Molina A, Molina E, Black WC: **Mitochondrial DNA variation among *Anopheles albimanus* localities**. *Am J Trop Med Hyg* 1999, **61**:230–239.
 53. Molina-Cruz A, De Mérida AM, Mills K, Rodríguez F, Schoua C, Yurrita MM: **Gene flow among *Anopheles albimanus* populations in Central America, South America, and Caribbean assessed by microsatellites and mitochondrial DNA**. *Am J Trop Med Hyg* 2004, **71**:350–359.
 54. Kambhampati S, Rai KS: **Mitochondrial DNA variation within and among populations of the mosquito *Aedes albopictus***. *Genome* 1991, **34**:288–292.
 55. Conn JE, Wilkerson RC, Segura NO, De Souza RTL, Schlichting CD, Wirtz RA, Povoá MM: **Emergence of a new neotropical malaria vector facilitated by human migration and changes in land use**. *Am J Trop Med Hyg* 2002, **66**:18–22.
 56. Conn JE, Mirabello L: **The biogeography and population genetics of neotropical vector species**. *Heredity* 2007, **99**:245–256.
 57. McKeon S, Lehr M, Wilkerson R, Ruiz J, Sallum M, Lima JBP, Povoá MM, Conn JE: **Lineage divergence detected in the malaria vector *Anopheles marajoara* (Diptera: Culicidae) in Amazonian Brazil**. *Malar J* 2010, **9**:271.
 58. Lehr MA: *Phylogenetics and Phylogeography of a Neotropical Anophelinae Cripti Species Complex*, MSc thesis. University of Vermont; 2003.
 59. Kull C, Grosjean M, Veit H: **Modelling Modern and Late Pleistocene glacio-climatological conditions in the North Chilean Andes (29°S–30°S)**. *Climate Change* 2002, **52**:359–381.
 60. Rejmankova E, Savage HM, Rejmanek M, Arredondo-Jimenez JJ, Roberts DR: **Multivariate analysis of relationship of between habitats, environmental factors and occurrence of anopheline mosquito larvae *Anopheles albimanus* and *A. pseudopunctipennis* in southern Chiapas, Mexico**. *J Appl Ecol* 1991, **28**:827–841.
 61. Rejmankova E, Roberts DR, Harbach RE, Pecor J, Peyton EL, Manguin S, Krieg R, Polanco J, Legters L: **Environmental and regional determinants of *Anopheles* (Diptera: Culicidae) larval distribution in Belize, Central America**. *Env Entomol* 1993, **22**:978–992.
 62. Manguin SE, Roberts DR, Peyton EL, Rejmankova E, Pecor J: **Characterization of *Anopheles pseudopunctipennis* larval habitats**. *J Am Mosq Control Assoc* 1996, **1996**(12):619–626.

doi:10.1186/1756-3305-7-423

Cite this article as: Dantur Juri et al.: Demographic history and population structure of *Anopheles pseudopunctipennis* in Argentina based on the mitochondrial COI gene. *Parasites & Vectors* 2014 **7**:423.