

REVIEW

Open Access



Global trend of *Plasmodium malariae* and *Plasmodium ovale* spp. malaria infections in the last two decades (2000–2020): a systematic review and meta-analysis

Joseph Hawadak^{1†}, Rodrigue Roman Dongang Nana^{1,2†} and Vineeta Singh^{1*}

Abstract

Background: Recent studies indicate that the prevalence of non-falciparum malaria, including *Plasmodium malariae* and *Plasmodium ovale* spp., is increasing, with some complications in infected individuals. The aim of this review is to provide a better understanding of the malaria prevalence and disease burden due to *P. malariae* and *P. ovale* spp.

Methods: The Preferred Reporting Items for Systematic Reviews and Meta-Analyses (PRISMA) guidelines and the Joanna Briggs Institute prevalence study assessment tool were used to select and evaluate the studies, respectively. Six databases: PubMed, WHOLIS, Wiley Library, ScienceDirect, Web of Science and Google Scholar were used to screen articles published during the period January 2000–December 2020. The pooled prevalence estimates for *P. malariae* and *P. ovale* spp. were analysed using a random-effects model and the possible sources of heterogeneity were evaluated through subgroup analysis and meta-regression.

Results: Out of the 3297 studies screened, only 113 studies were included; among which 51.33% were from the African Region. The *P. malariae* and *P. ovale* spp. pooled prevalence were 2.01% (95% CI 1.31–2.85%) and 0.77% (95% CI 0.50–1.10%) respectively, with the highest prevalence in the African Region. *P. malariae* was equally distributed among adults (2.13%), children (2.90%) and pregnant women (2.77%) ($p=0.862$), whereas *P. ovale* spp. was more prevalent in pregnant women (2.90%) than in children ≤ 15 years (0.97%) and in patients > 15 years old (0.39%) ($p=0.021$). In this review, data analysis revealed that *P. malariae* and *P. ovale* spp. have decreased in the last 20 years, but not significantly, and these species were more commonly present with other *Plasmodium* species as co-infections. No difference in prevalence between symptomatic and asymptomatic patients was observed for either *P. malariae* or *P. ovale* spp.

Conclusion: Our analysis suggests that knowledge of the worldwide burden of *P. malariae* and *P. ovale* spp. is very important for malaria elimination programmes and a particular focus towards improved tools for monitoring transmission for these non-falciparum species should be stressed upon to deal with increased infections in the future.

Keywords: Malaria infections, *Plasmodium malariae*, *Plasmodium ovale* spp., Prevalence, Meta-analysis

Background

Malaria is an infectious disease caused by parasites of the genus *Plasmodium* and transmitted by infected *Anopheles* female mosquitoes in tropical and subtropical countries. This disease is a major public health problem globally, with 229 million estimated cases in 2019, mostly

*Correspondence: vineetas_2000@yahoo.com

†Joseph Hawadak and Rodrigue Roman Dongang Nana contributed equally to this work

¹ICMR-National Institute of Malaria Research, Dwarka, Sector 8, New-Delhi 110077, India

Full list of author information is available at the end of the article



in African and South-East Asia regions [1]. Several international programmes have been launched to reduce and/or eradicate malaria worldwide, and considerable progress has been made over the past two decades, resulting in a decrease in the global incidence of malaria from 363 to 225 cases per 1000 population during the years 2000 to 2019 [1]. Unfortunately, recent reports of the emergence of artemisinin resistance in South-East Asia in the Greater Mekong Subregion adds another challenge hindering the efforts of malaria control programmes [2–4].

Among all human *Plasmodium* spp., *P. falciparum* and *P. vivax* receive particular scientific research interest, as they are responsible for the majority of malaria infections and disease severity in human patients, whereas *P. ovale* spp. and *P. malariae* remain neglected tropical diseases due to their low prevalence and still lower disease severity as compared to falciparum malaria [3, 5, 6]. The clinical features due to *P. malariae* and *P. ovale* spp. are thus poorly known, as very few reported studies are available compared to other human *Plasmodium* spp. [7]. *P. ovale* spp. are recognized to generally induce weak parasitaemia in the infected host, are very often responsible for relapses and sometimes have also been identified in certain renal complications [8]. In recent years, a steady rise in malaria infection cases associated with *P. ovale* spp. and *P. malariae* has been observed in many parts of sub-Saharan Africa and South America, with their prevalence being around 10% and 20%, respectively, in both symptomatic and asymptomatic malaria infections, causing concern for elimination programmes [9–14]. This increase in prevalence underscores the need for attention towards them, and therefore knowledge about their demographic distribution and associated morbidity is essential for understanding their epidemiology. In this review article, we have focused on estimating the disease burden and the epidemiological aspects of malaria infections caused by *P. malariae* and *P. ovale* spp., highlighting the need for increased attention towards these species for successful malaria elimination programmes.

Methods

Search strategy

The Preferred Reporting Items for Systematic Reviews and Meta-Analyses (PRISMA) guidelines were used to select studies for this review [15], and six databases (PubMed, WHOLIS, Wiley Library, ScienceDirect, Web of Science and Google Scholar) were explored to access articles (Additional file 1). Although the search strategy differs slightly from one database to another, a systematic computerized strategy was adopted using MeSH terms and in combination with Boolean operators: ["malaria" OR "*Plasmodium*" AND ("malariae" OR "ovale" OR "curtisi" OR "wallikeri") AND ("prevalence" OR

"epidemiology" OR "proportion" OR "frequency") AND ("PCR" OR "molecular")] (Additional file 2). In addition, a manual Google search and filtering of the reference lists of included studies were performed to access additional articles. The search included articles in both English and French languages published between January 2000 and December 2020.

Selection of studies and data extraction

All epidemiological studies that reported the prevalence of *P. malariae* and *P. ovale* spp. using molecular techniques as a species identification method were considered in this review. Only research articles published in peer-reviewed journals were included, and studies with no clear epidemiological data on *Plasmodium* spp. were excluded from the review. All articles were imported into Zotero bibliographic reference management software, and duplicate files were deleted. A data extraction form with the name of the first author, year of publication, period of data collection, geographical location (continent and country), target group (subject and subject status), type of study, sample size, sampling technique, diagnostic method, target gene and a positive result for each human *Plasmodium* species was prepared in a Microsoft Excel spreadsheet. The data files extracted independently by the first two authors were systematically evaluated for any inconsistencies, and any further discrepancies were resolved after discussion with the team supervisor.

Evaluation of criteria for inclusion of studies

The quality and risk of bias in included studies were assessed using an adapted version of the Joanna Briggs Institute (JBI) prevalence study assessment tool [16]. The evaluation criteria were based on eight parameters: (i) appropriate sample frame, (ii) appropriate sampling technique, (iii) adequate sample size, (iv) description of the study subject and settings in detail, (v) sufficient data analysis, (vi) use of validated methods for the conditions identified, (vii) valid measurement of the condition for all participants and (viii) use of appropriate statistical analysis. For each evaluation item, a score of 1 was awarded if found in the article; zero was given if not, and no score if the evaluation tool was unclear or not applicable to the study. Studies that received a score ≥ 5 were considered acceptable for final inclusion in the study (Additional file 3: Table S1).

Data analysis

Data analysis was performed with *Metaprop* command [17] in Stata 16.1 software (StataCorp LLC, USA). The combined prevalence and 95% confidence intervals (CIs) were computed using a random-effects model

with Freeman-Tukey double arcsine transformation and restricted maximum likelihood method for stabilization and estimating the covariance. Heterogeneity between studies was assessed using I^2 , whose values of 25%, 50% and 75% were considered as low, moderate and high degrees of heterogeneity, respectively. The risk difference (RD) was performed to compare the occurrences of *P. malariae*/*P. ovale* spp. in mono-infections and co-infections with other species using OpenMeta[Analyst] software. Publication bias was also assessed using a funnel diagram by visually inspecting the plots and exact Egger's test for small-study effects. Possible sources of heterogeneity were assessed using subgroup analysis and meta-regression. We computed a subgroup analysis including only studies conducted in defined groups: (i) pregnant women, (ii) children ≤ 15 years old and (iii) participants > 15 years old. In the pregnant women group, when several samples were taken (peripheral blood, umbilical cord and/or placenta), only the results of the peripheral blood were used in the meta-analysis. A meta-regression with the sample size, date of publication and period of data collection as a covariate was performed to evaluate whether they were confounders of the *P. malariae* and/or *P. ovale* spp. pooled prevalence. All statistical analyses were considered statistically significant for values of $p < 0.05$.

Results

Study selection and identification

A total of 3297 citations were screened initially, where 3278 were obtained from the six selected databases and 19 others through the manual Google search for inclusion in this review study. Five hundred and forty-six were duplicates and hence deleted. From the 2751 remaining articles, 2155 were excluded after reviewing the abstract, and a further 451 studies were excluded for one of the following reasons: (i) no access to the full text ($n = 32$), (ii) article in a language other than English or French ($n = 4$), (iii) epidemiological data on imported malaria cases ($n = 46$), (iv) comparative studies or diagnosis made by a new method ($n = 19$) and (v) not related to our study framework ($n = 350$). Of the remaining 145 articles, 32 were excluded because of their methodology or a lack of epidemiological information (Additional file 3: Table S2). Finally, 113 studies involving 195,065 subjects were considered for the systematic review (Fig. 1). Ninety-five and 102 studies were included in quantitative analysis of *P. ovale* spp. and *P. malariae* prevalence, respectively. The characteristics of the studies included in this review are summarized in Additional file 3: Table S3.

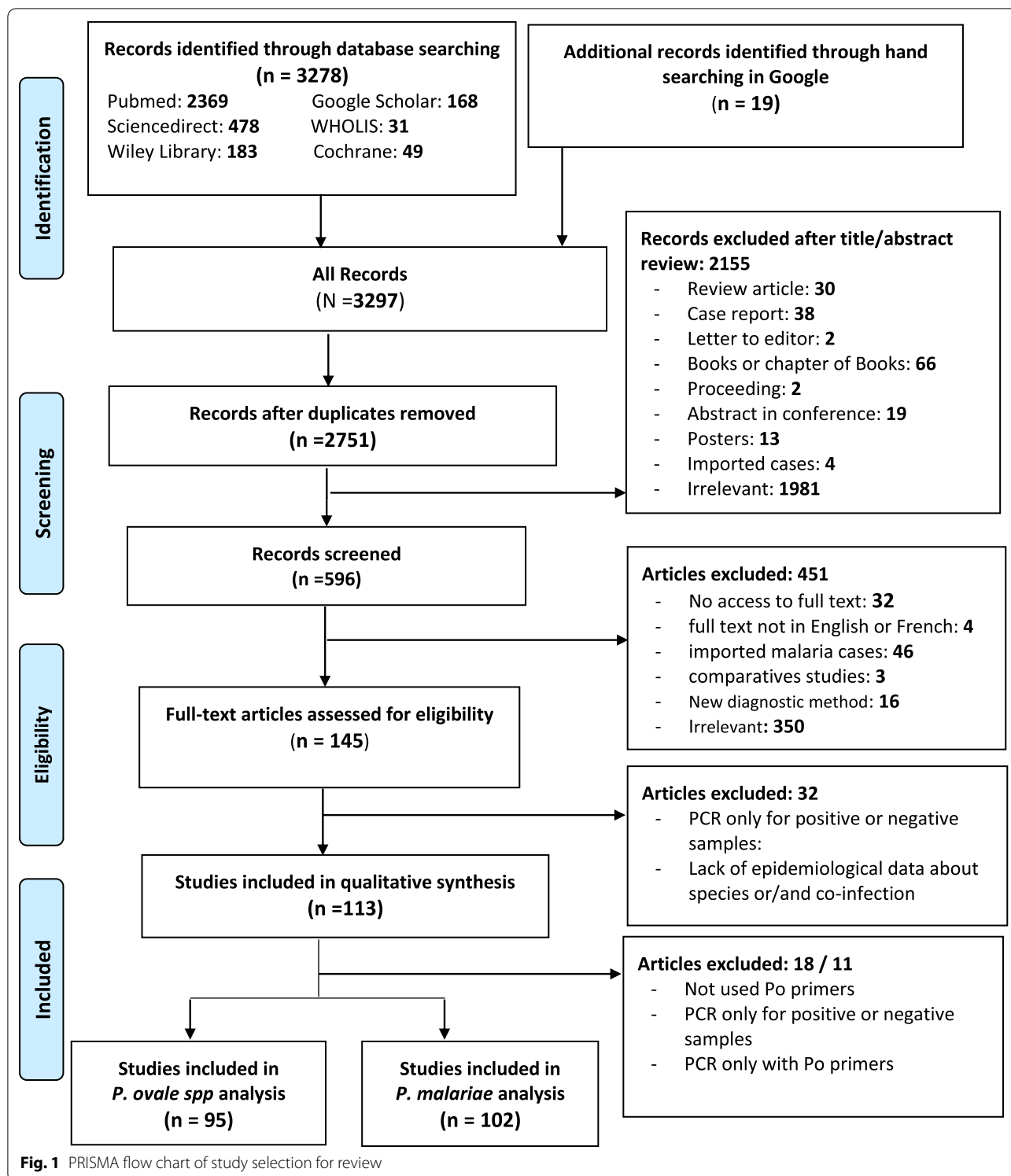
Characteristics of the included studies

Of the 113 studies included in our review, more than half (51.33%; $n = 58$) were published within the last 5 years, but no study was published in the year 2003 (Fig. 2a). The epidemiological studies included in this review covered five out of six pre-classified World Health Organization (WHO) health regions, with the African Region (AFR) accounting for half of the studies (57/113), followed by the Western Pacific (WPR) and South-East Asia regions (SEAR) with 21.24% (24/113) and 15.93% (18/113), respectively (Fig. 2b). The smallest and largest study samples had 47 and 17,765 participants, respectively, with an average sample size of 1726 (interquartile range [312–1724]). Studies from AFR ($n = 17,765$), the Eastern Mediterranean (EMR) ($n = 16,075$) and WPR ($n = 13,980$) reported the largest sample size (Additional file 3: Table S3). Forty-nine studies (43.36%) comprised both symptomatic and asymptomatic participants, whereas 26.55% and 30.09% included respectively asymptomatic and symptomatic participants only. Children under 15 years old were targeted in 10.62% of studies, mostly in AFR ($n = 11$); pregnant women were investigated in 7.08% in the African Region ($n = 7$) [18–24] and Region of the Americas (AMR) ($n = 1$) [25], and one study (0.88%) was conducted among 4570 women of childbearing age in the Democratic Republic of the Congo (DRC) [26] (Additional file 3: Table S3).

All included studies used molecular diagnostic methods including nested polymerase chain reaction (PCR) (71.43%), real-time polymerase chain reaction (RT-PCR) (10.71%), quantitative polymerase chain reaction (qPCR) (4.46%) and loop-mediated isothermal amplification (LAMP) (3.54%) for *Plasmodium* spp. identification. Nested PCR with four pairs of species-specific primers (*P. falciparum*, *P. vivax*, *P. malariae* and *P. ovale* spp.) were seen in the majority of studies ($n = 108$), and a few also used *P. knowlesi*-specific primers for species identification and confirmation [27–31]. Only 7.07% of the studies used sympatric species-specific primers of *P. ovale curtisi* and *P. ovale wallikeri* [9, 10, 21, 32–36]. The target genes for the PCR assay were mainly 18S rRNA (83.19%), cytochrome b (9.73%) and plasmepsin 4 (1.17%) genes [33, 37]. One study from South-East Asia targeted 18S rRNA and cytochrome b genes simultaneously [38] (Additional file 3: Table S3).

P. malariae and *P. ovale* spp. prevalence

The aggregate prevalence of *P. malariae* in the 102 studies using the random-effects model was 2.01% (95% CI 1.31–2.85%, $\tau^2 = 0.07$), with high and significant heterogeneity between the studies ($I^2 = 99.19\%$, $p < 0.001$). In comparison to *P. malariae*, the prevalence of *P. ovale*

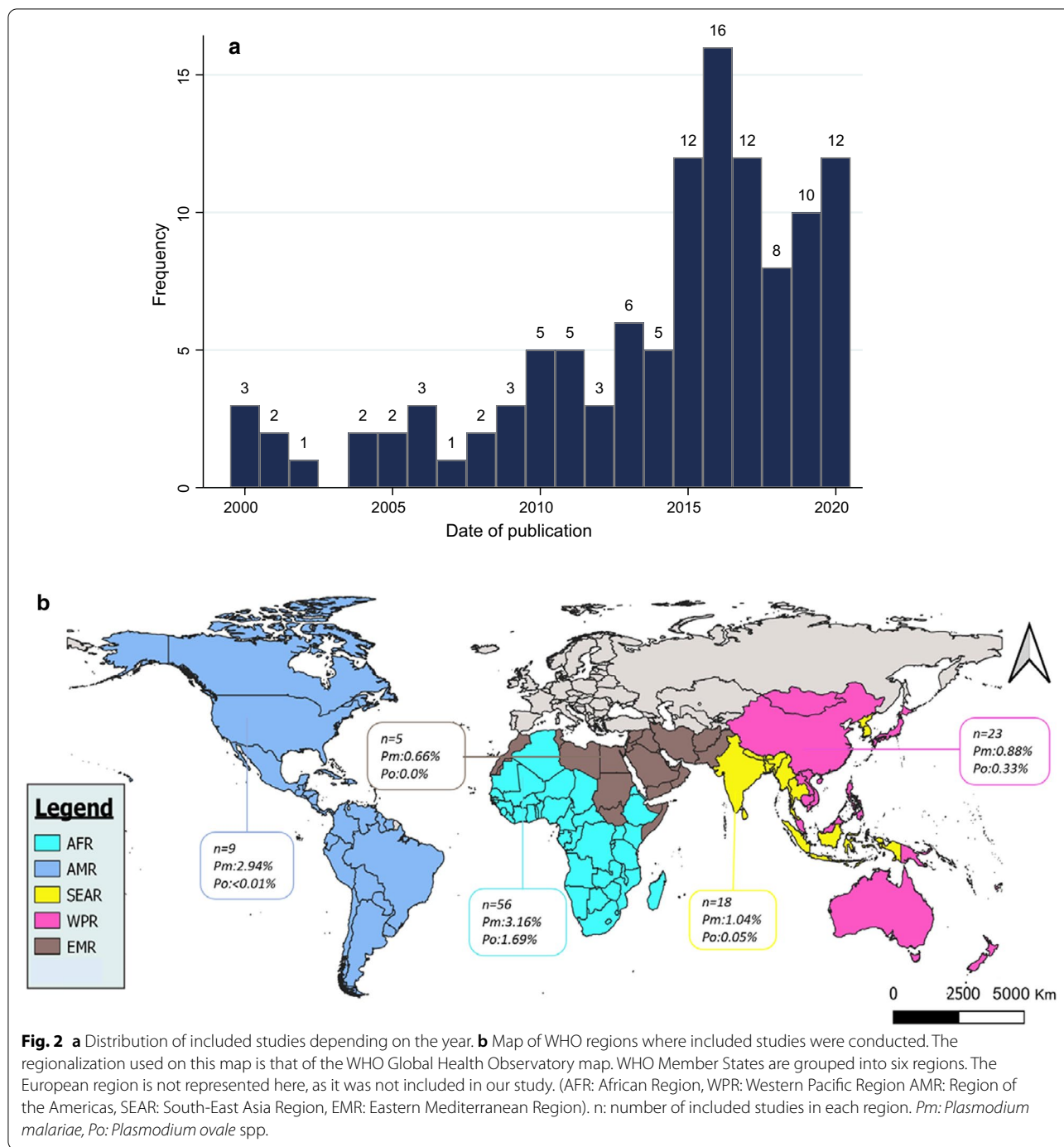


spp. using the same model was found to be 0.77% (95% CI 0.50–1.10%, $\tau^2=0.02$), with significant heterogeneity ($I^2=97.85\%$, $p<0.001$) (Additional file 3: Tables S4 and S5).

Subgroup analysis

Influence of WHO region

The AFR revealed the highest prevalence of the two



species studied, 3.16% (95% CI 2.00–4.56%) for *P. malariae* and 1.69% (95% CI 1.11–2.38%) for *P. ovale* spp. The EMR showed the lowest prevalence of *P. malariae* of 0.06% (95% CI 0–0.52%) and no cases of *P. ovale* spp. The AMR had the second highest *P. malariae* prevalence of 2.94% (95% CI 0–12.56%). The differences

among regions were found to be statistically significant ($I^2 = 97.85\%$, $p < 0.001$) (Table 1).

Influence of participants’ status: symptomatic versus asymptomatic

The prevalence of *P. malariae* was found to be lower in asymptomatic than in symptomatic subjects, 1.31% (95%

Table 1 Distribution of *P. malariae* and *P. ovale* spp. by WHO region

WHO region	<i>P. malariae</i>			<i>P. ovale</i> spp.		
	No. of studies	Prevalence % [95% CI]	<i>p</i> value	No. of studies	Prevalence % [95% CI]	<i>p</i> value
Africa	50	3.16 [2–4.56]	<0.001	50	1.69 [1.11–2.38]	<0.001
Western Pacific	21	0.88 [0.24–1.87]		20	0.33 [0.06–0.75]	
South-East Asia	17	1.04 [0.33–2.08]		16	0.05 [0.00–0.17]	
Eastern Mediterranean	5	0.06 [0–0.52]		5	No case	
Americas	9	2.94 [0–12.56]		4	0.00 [0–0.01]	

CI 0.60–1.71%) and 1.09% (95% CI 0.04–3.92%), respectively, with no significant difference ($p=0.792$) (Fig. 3a). Similarly, there was no significant difference ($p=0.107$) for *P. ovale* spp. infection between symptomatic 0.60% (95% CI 0.16–1.24%) and asymptomatic subjects 0.22% (95% CI 0.05–0.48%) (Fig. 3b).

Prevalence among children, adults and pregnant women

On analysis, the *P. malariae* species was found to be equally distributed among adults (2.13% with 95% CI 0.66–4.35%), children (2.90% with 95% CI 0.94–5.84%) and pregnant women (2.77% with 95% CI 0.72–6.01%) ($p=0.862$). In contrast, the *P. ovale* spp. were seen to be more prevalent in pregnant women 2.90% (95% CI 0.94–5.79%) than in children ≤ 15 years 0.97% (95% CI 0.08–2.66%) and in patients > 15 years old 0.39% (95% CI 0.10–0.85%) ($p=0.021$) (Figs. 4a, b).

P. ovale wallikeri and *P. ovale curtisi* prevalence

For *P. ovale* spp. pooled prevalence, only five out of 95 included studies clearly revealed *P. ovale* subspecies prevalence. In these studies, *P. ovale curtisi* (1.65% with 95% CI 0.14–4.73%) appeared to be more prevalent than *P. ovale wallikeri* (1.55% with 95% CI 0.38–3.47%). However, there was no significant difference between them ($p=0.698$) (Additional file 4).

Mixed infection prevalence

The prevalence of *P. malariae* co-infections with at least one of the human *Plasmodium* species was 2.14% (95% CI 1.32–3.15%) versus 0.85% (95% CI 0.59–1.16%) in mono-infections, whereas *P. ovale* spp. showed a prevalence of 1.84% (95% CI 1.16–2.69%) in co-infections and 0.66% (95% CI 0.43–0.94%) in mono-infections. Analysis of the RD showed that both species were more likely to be present in co-infections than mono-infections in the studied subjects with RD value 4.16% (95% CI 1.59–6.73%, $p=0.002$) for *P. malariae* and 5.05% (95% CI 2.40–7.69%, $p<0.001$) for *P. ovale* spp. (Additional file 5).

Meta-regression and publication bias

Evolution of prevalence over the years

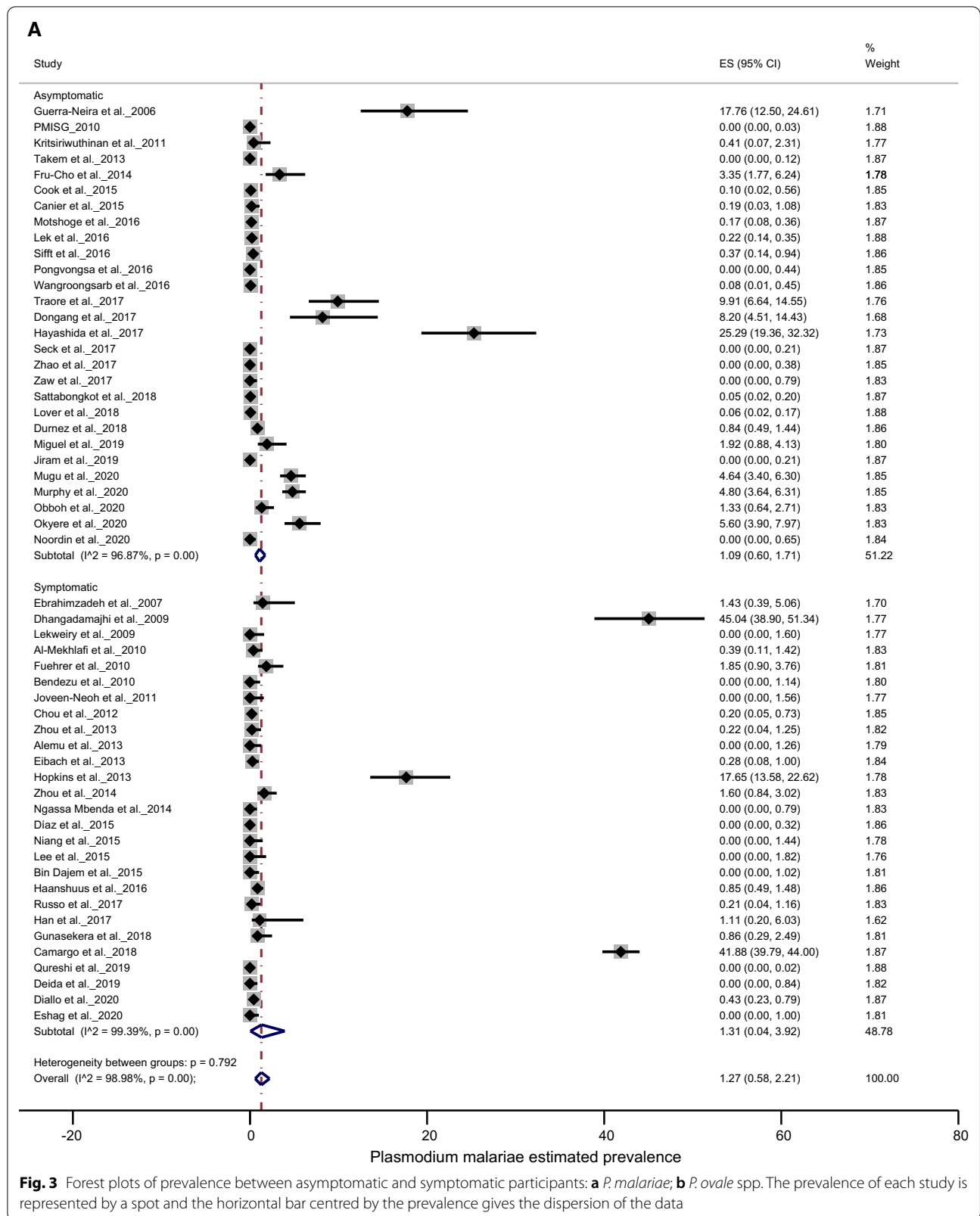
The evolution of *P. malariae* and *P. ovale* spp. prevalence over the years was explored by meta-regression. Globally, a negative correlation between pooled prevalence and years of data collection was observed, though it was not significant for either *P. malariae* (Coef = -0.0131 ; $p=0.059$) or *P. ovale* spp. (Coef = -0.0025 ; $p=0.431$) (Fig. 5a, b). This observation was also the same for each region separately except for the WPR, where the *P. malariae* prevalence had declined significantly (Coef = -0.0212 , $p<0.001$) (Additional file 6).

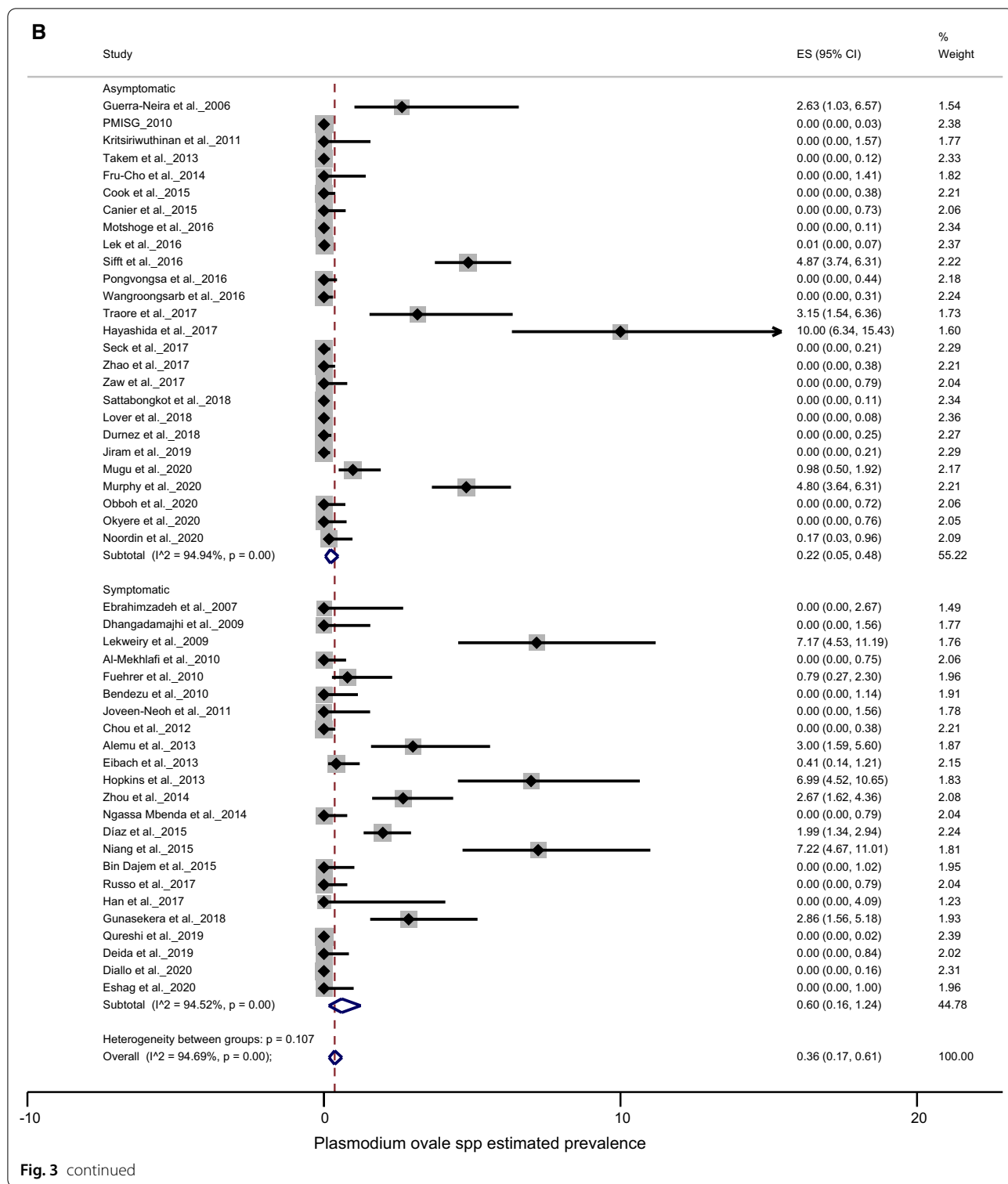
Exploration of other potential confounders

According to the results, none of the variables of sample size, year of publication or period of data collection was a significant moderator in estimation of either *P. malariae* or *P. ovale* spp. prevalence; therefore, no evidence of publication bias was observed in the estimated prevalence due to these factors (Table 2). In addition, the funnel plot does not indicate any evidence of publication bias for either of the two species. However, the exact Egger's test for small-study effect was significant for *P. ovale* spp. ($p=0.046$), where the small study size may be the reason for bias towards *P. ovale* spp. prevalence (Additional file 7).

Discussion

In the past two decades, WHO has reported a slight decline in malaria cases, from 238 million cases in 2000 to 229 million in 2019, with incidence declining from 363 to 225 cases per 1000 population through increased coverage of preventive and control measures (particularly long-lasting insecticide-treated nets, early diagnosis using rapid diagnostic tests, global improvement of WHO's policy development and dissemination processes for malaria control) [1, 39, 40]. These have reflected in the regression of malaria and even its eradication in some countries during this period, notably in the United Arab Emirates, Morocco, Armenia, Argentina, Paraguay, Algeria, Uzbekistan, Sri Lanka, Turkmenistan and Kyrgyzstan [1]. This systematic review and meta-analysis estimated





the disease trend of *P. malariae* and *P. ovale* spp. from January 2000 to December 2020.

The overall prevalence of *P. malariae* infections (2.01%) was higher as compared to *P. ovale* spp. (0.77%), with

AFR being the most frequently affected for both species. Epidemiological studies on malaria conducted in the AMR, SEAR and EMR did not very often pay attention to *P. malariae* and/or *P. ovale* spp. due to their low

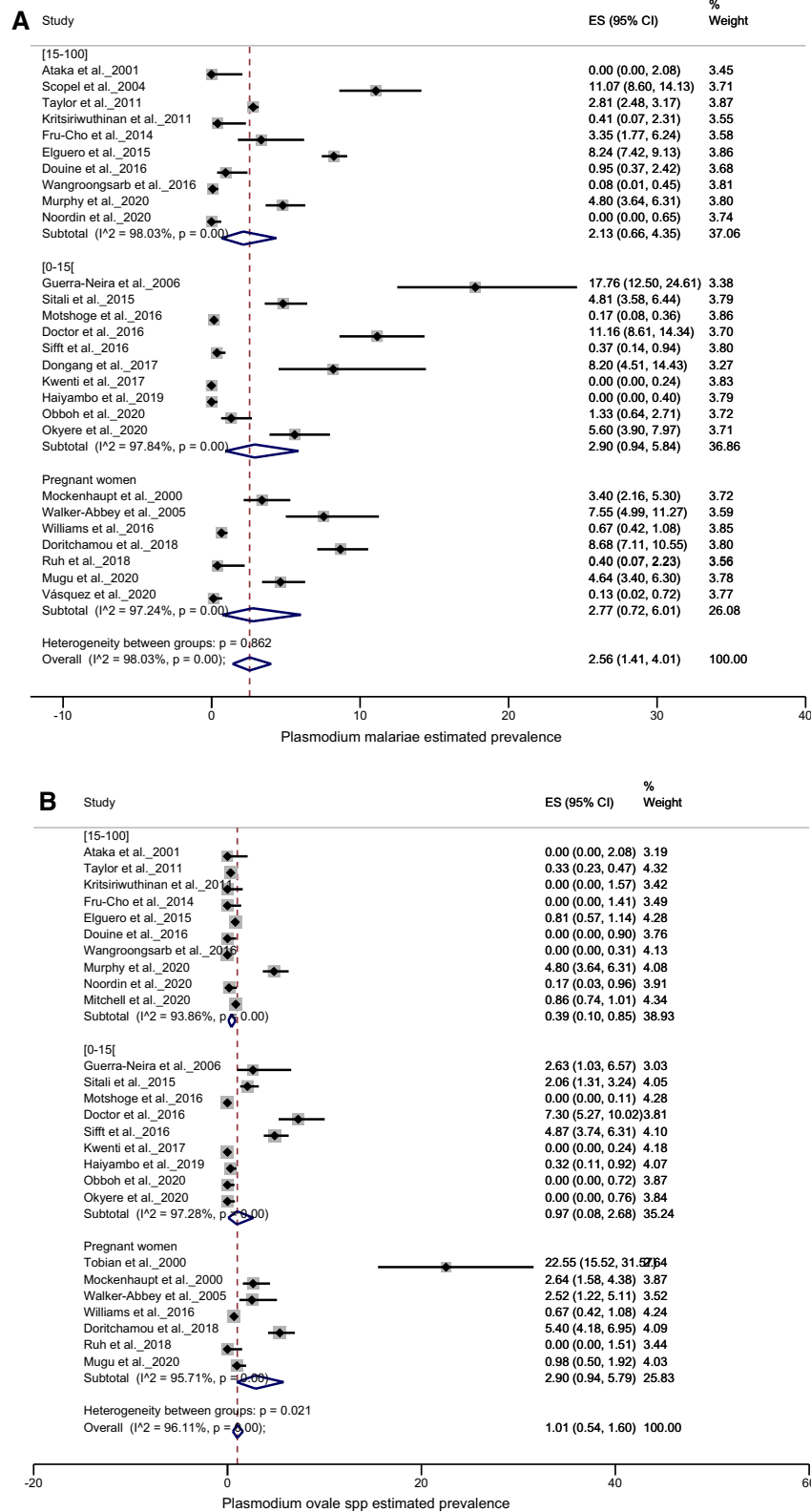


Fig. 4 Forest plots of *Plasmodium* prevalence in studies conducted in specific groups (pregnant women, children under 15 and participants over 15 years old). **a** *P. malariae* prevalence, **b** *P. ovale* spp. prevalence. The prevalence of each study is represented by a spot and the horizontal bar centred by the prevalence gives the dispersion of the data

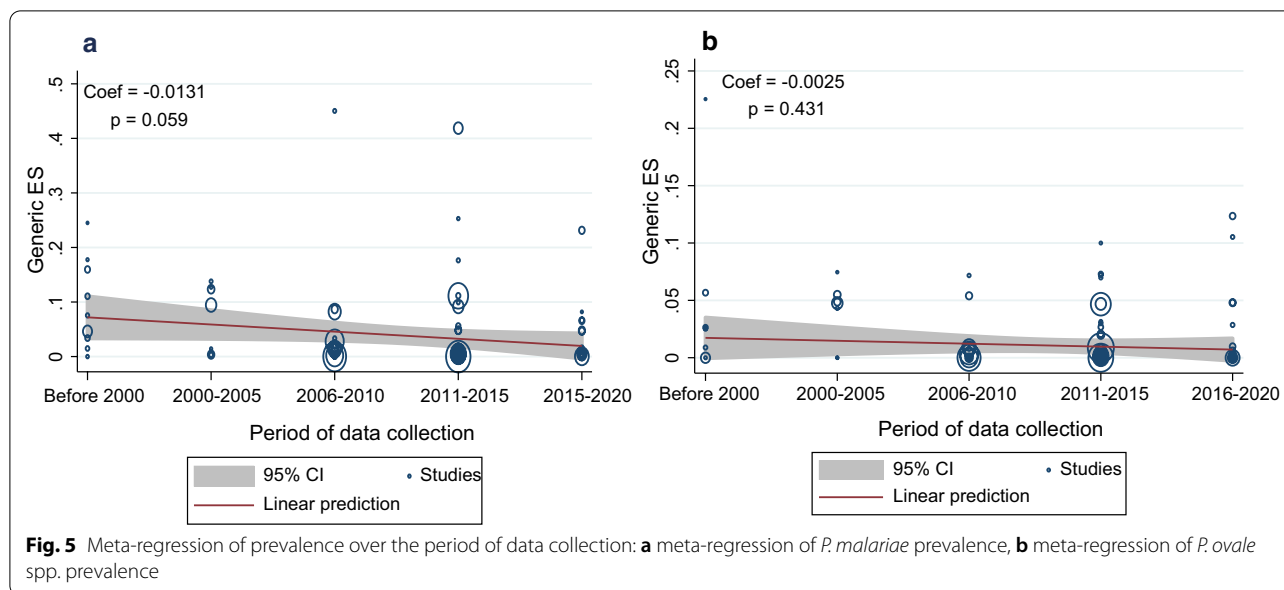


Table 2 Meta-regression of potential confounders: sample size, date of publication, period of data collection

Species	Cofactors	Coef	[95% confidence interval]		z	p value
<i>P. malariae</i>	Sample size	- 2.36E-06	- 7.24E-06	2.51E-06	- 0.95	0.342
	Date of publication	- 0.0021299	- 0.0051524	0.0008927	- 1.38	0.167
	Period of data collection	- 0.0131058	- 0.0266983	0.0004866	- 1.89	0.059
<i>P. ovale</i> spp.	Sample size	- 4.95E-07	- 1.44E-06	4.45E-07	- 1.03	0.302
	Date of publication	- 0.0003042	- 0.0015801	0.0009716	- 0.47	0.640
	Period of data collection	- 0.0025502	- 0.008897	0.0037966	- 0.79	0.431

prevalence/severity [12, 41–46], yet some studies report *P. malariae* prevalence of more than 40% in these regions [12, 47]. This may be the reason for the underestimation of *P. malariae* and *P. ovale* spp. prevalence rates in these regions, as observed in this review. Negative correlations obtained in the meta-regression of prevalence as a function of data collection period indicate that the prevalence of both *P. malariae* and *P. ovale* spp. species have declined over the last 20 years, but not significantly. WHO has several strategic programmes to eliminate malaria, with a particular focus on *P. falciparum* and *P. vivax* malaria but none specific to *P. malariae* or *P. ovale* spp., which may have resulted in a low regression observed for these two species with a significant decline of *P. falciparum* and *P. vivax* prevalence recorded globally [39, 48].

Gneme et al. [49], in a 4-year longitudinal study conducted in Burkina Faso from 2007 to 2010, revealed that the prevalence of *P. malariae* increased 15-fold and that of *P. ovale* spp. increased fourfold. Moreover, in the last 5 years, fairly high prevalence has been reported for *P. ovale* spp. [10, 13] and *P. malariae* [9, 10, 12] (> 10% and

20%, respectively) in AFR and AMR due to the increased usage of diagnostic PCR assay [50]. The *P. ovale* spp. was reported in 12 out of 26 provinces of the DRC during 2007. Six years later, in 2013, the demographic and health survey revealed *P. ovale* spp. in 24/26 provinces of DRC, with an increased prevalence in several provinces [51]. This reflects a spread of *P. ovale* spp. that urgently needs to be addressed, as DRC is the second most affected country by malaria in the world [1]. Several studies have also reported an equal distribution of *P. ovale* subspecies in AFR [21, 32, 35, 51]. High prevalence of asymptomatic malaria including *P. malariae* [9, 34, 42, 52–54] and *P. ovale* spp. [9, 35, 54, 55] infections were reported in many studies. Our analysis indicates that both species showed the same distribution between symptomatic and asymptomatic subjects [56]. *P. malariae* and *P. ovale* spp. are often misidentified as *P. falciparum* and *P. vivax*, respectively, which complicates the routine diagnosis [8, 57] and further leads to asymptomatic disease reservoirs [36] which could jeopardize malaria elimination programmes and therefore merits more attention.

Children and pregnant women are well known as vulnerable groups to malaria infection. Woldearegai et al. [10] reported in a Gabonese population that immunity to *P. malariae* builds up with age similarly to *P. falciparum*, but incompletely due to lower parasitaemia, which induces limited immune stimulation. In this study, subgroup analysis showed that *P. malariae* appears to have the same distribution in children, adults and pregnant women, whereas the highest *P. ovale* spp. prevalence among the subgroups was observed in pregnant women. Knowing that *P. malariae* has the same therapeutic protocol as *P. falciparum* [3, 58], the use of intermittent preventive treatment in pregnancy (ITPp) contributes to the reduction of *P. malariae* burden in this group, unlike *P. ovale* spp., which can remain dormant in the liver (hypnozoites stage) for long periods. A cross-sectional study including 4570 women of childbearing age conducted by Taylor et al. [26] found that *P. malariae* was more prevalent in non-pregnant than pregnant women in the Wocba region (DRC). Unfortunately, this observation could not be linked with any factor, as the authors had no data on ITPp or antenatal care. On the other hand, Mitchell and colleagues reported *P. ovale* spp. prevalence twice as high in men (mainly miners) as in women, suggesting that male susceptibility was possibly due to the high exposure in their work environment. Therefore, the conclusions as to the risk groups for these two species remain controversial.

In the reported meta-analysis, the difference in risk of co-infections with another *Plasmodium* species reveals that both *P. malariae* and *P. ovale* spp. occurred more in co-infections, as reported earlier [9, 10, 13, 59–62]. The recurrence of the coexistence of two or more *Plasmodium* species can be explained by the density-dependent regulation model proposed by Bruce and Day [63, 64]. This model suggests that when an individual carrying a *Plasmodium* species is reinfected by a second species, the parasitaemia due to the first species is down-regulated. However, when the species with the highest parasitaemia exceeds a certain threshold, the host immune response is triggered to control the infection. Once the infection is under control, the system is deactivated, promoting the growth of the second infecting species. This cycle is believed to be responsible for the persistence of several species in the host. In addition, it is also known that *P. malariae* and *P. ovale* spp. preferentially develop in mature and younger red blood cells respectively [65, 66]. This differential target of invasion and no antagonism mechanism reported between these two species could explain their co-existence in an individual. Obviously, this requires further research, as not much data is available in this regard. Although not considered a significant threat to malaria

elimination, the insufficient knowledge of the biological dynamics of *P. malariae* and *P. ovale* spp. should not be neglected because of their low prevalence and disease severity.

The strength of this study lies in the estimation of the prevalence rates of these two non-*falciparum* species based essentially on molecular techniques known to be the most sensitive diagnostic tool, and the global coverage of the WHO health regions in the last two decades, thus offering a global overview of *P. malariae* and *P. ovale* spp. malaria burden. However, the lack of whole information in some studies made it impossible to thoroughly analyse the data for identifying the environmental and biological factors that regulate the dynamics of these two species and which will be the subject of our future investigations.

Limitations

However, this study had certain limitations. First, the pooled prevalence data was estimated from studies conducted in different geographic areas and at different times, as reflected in the high heterogeneity observed. Second, the AFR had ten times as many papers as some of the regions included, which could be a source of imbalance in pooled prevalence data. Third, not all studies mentioned the characteristics of the study areas to permit us to explore other sources of heterogeneity. Fourth, only papers published in English or French were included in this review. Finally, field or laboratory working conditions that were not always clearly detailed and/or sometimes differed could have generated several other confounding variables that affected our results.

Conclusion

This study summarizes the distribution and the global trend of *P. malariae* and *P. ovale* spp. prevalence in the last two decades. Based on our results, the prevalence of both species has declined slightly over this period, although high prevalence has been recorded in AFR and the AMR recently. Both species are equally prevalent in asymptomatic and symptomatic individuals of all age groups, which supports the interest of their inclusion in the new strategies for prevention, treatment and malaria elimination programmes.

Abbreviations

AFR: African Region; AMR: Region of the Americas; DRC: Democratic Republic of the Congo; EMR: Eastern Mediterranean Region; JBI: Joanna Briggs Institute; LAMP: Loop-mediated isothermal amplification; PCR: Polymerase chain reaction; PRISMA: Preferred Reporting Items for Systematic Reviews and Meta-Analyses; qPCR: Quantitative polymerase chain reaction; RD: Risk difference;

RT-PCR: Real-time polymerase chain reaction; SEAR: South-East Asia Region; WPR: Western Pacific Region.

Supplementary Information

The online version contains supplementary material available at <https://doi.org/10.1186/s13071-021-04797-0>.

Additional file 1. PRISMA Checklist.

Additional file 2. Search strategy.

Additional file 3. Table S1. Score of included study. **Table S2.** Studies excluded from meta-analysis. **Table S3.** Characteristics of included studies. **Table S4.** *Plasmodium malariae* pooled prevalence. **Table S5.** *Plasmodium ovale* in future. pooled prevalence.

Additional file 4. Comparison of *P. ovale curtisi* and *P. ovale wallikeri* prevalence.

Additional file 5. Risk difference (RD) mono-infection vs mix infection.

Additional file 6. Meta-regression of prevalence over the period of data collection by region.

Additional file 7. Funnel plot for publication bias and Egger's test for small study effects.

Acknowledgements

The authors are grateful to the Department of Biotechnology (DBT), Government of India and The World Academy of Sciences (TWAS) for awarding Fellowship to JH and RRDN at the ICMR-National Institute of Malaria Research, Delhi, India. The authors also thank Stéphane Koum, Ph.D. (University of Douala, Cameroon) for compiling the map.

Authors' contributions

All authors have contributed to the study design. VS designed the study. JH and RRDN conducted the literature search, extracted and analysed the data. JH and RRDN wrote the manuscript and VS reviewed it. VS supervised all stages of the work. All authors read and approved the final manuscript.

Funding

This research did not receive any specific grant from funding agencies in the public, commercial, or not-for-profit sectors.

Availability of data and materials

All data generated or analyzed during this study are included in this published article and its additional files.

Declarations

Ethical considerations

As this is a systematic review and meta-analysis, ethical approval was not required. However, the recommendations in the PRISMA guidelines were strictly followed in conducting this systematic review and meta-analysis.

Consent for publication

Not applicable.

Competing interests

The authors declare that they have no conflicts of interest.

Author details

¹ICMR-National Institute of Malaria Research, Dwarka, Sector 8, New-Delhi 110077, India. ²Institute of Medical Research and Medicinal Plants Studies, PO Box 13033, Yaoundé, Cameroon.

Received: 25 February 2021 Accepted: 20 May 2021

Published online: 03 June 2021

References

1. WHO. World malaria report 2020. Geneva: World Health Organization; 2020.
2. Imwong M, Hien TT, Thuy-Nhien NT, Dondorp AM, White NJ. Spread of a single multidrug resistant malaria parasite lineage (PfPailin) to Vietnam. *Lancet Infect Dis*. 2017;17:1022–3.
3. Su X, Lane KD, Xia L, Sá JM, Wellems TE. Plasmodium genomics and genetics: new insights into malaria pathogenesis, drug resistance, epidemiology, and evolution. *Clin Microbiol Rev*. 2019;32:e00019-19.
4. Nsanabana C. Resistance to Artemisinin Combination Therapies (ACTs): do not forget the partner drug! *Trop Med Infect Dis*. 2019;4:26.
5. Amoah LE, Donu D, Abuaku B, Ahorlu C, Arhinful D, Afari E, et al. Probing the composition of *Plasmodium* species contained in malaria infections in the eastern region of Ghana. *BMC Public Health*. 2019;19:1617.
6. Yman V, Wandell G, Mutemi DD, Miglar A, Asghar M, Hammar U, et al. Persistent transmission of *Plasmodium malariae* and *Plasmodium ovale* species in an area of declining *Plasmodium falciparum* transmission in eastern Tanzania. *PLoS Negl Trop Dis*. 2019;13:e0007414.
7. Rajahram GS, Cooper DJ, William T, Grigg MJ, Anstey NM, Barber BE. Deaths from *Plasmodium knowlesi* malaria: case series and systematic review. *Clin Infect Dis*. 2019;69:1703–11.
8. Kotepui M, Kotepui KU, Milanez GD, Masangkay FR. Severity and mortality of severe *Plasmodium ovale* infection: a systematic review and meta-analysis. *PLoS ONE*. 2020;15:e0235014.
9. Hayashida K, Kajino K, Simukoko H, Simuunza M, Ndebe J, Chota A, et al. Direct detection of falciparum and non-falciparum malaria DNA from a drop of blood with high sensitivity by the dried-LAMP system. *Parasit Vectors*. 2017;10:26.
10. Woldearegai TG, Lalremruata A, Nguyen TT, Gmeiner M, Veletzky L, Tazemda-Kuitsouc GB, et al. Characterization of *Plasmodium* infections among inhabitants of rural areas in Gabon. *Sci Rep*. 2019;9:9784.
11. Taylor SM, Messina JP, Hand CC, Juliano JJ, Muwonga J, Tshetu AK, et al. Molecular malaria epidemiology: mapping and burden estimates for the Democratic Republic of the Congo, 2007. *PLoS ONE*. 2011;6:e16420.
12. Camargo M, Soto-De León SC, Del Río-Ospina L, Páez AC, González Z, González E, et al. Micro-epidemiology of mixed-species malaria infections in a rural population living in the Colombian Amazon region. *Sci Rep*. 2018;8:5543.
13. Sitali L, Miller JM, Mwenda MC, Bridges DJ, Hawela MB, Hamainza B, et al. Distribution of *Plasmodium* species and assessment of performance of diagnostic tools used during a malaria survey in southern and western provinces of Zambia. *Malar J*. 2019;18:130.
14. Guerra RI, Ore M, Valdivia HO, Bishop DK, Ramos M, Mores CN, et al. A cluster of the first reported *Plasmodium ovale* spp. infections in Peru occurring among returning UN peace-keepers, a review of epidemiology, prevention and diagnostic challenges in nonendemic regions. *Malar J*. 2019;18:176.
15. Moher D, Liberati A, Tetzlaff J, Altman DG, The PRISMA Group. Preferred reporting items for systematic reviews and meta-analyses: the PRISMA statement. *PLoS Med*. 2009;6:e1000097.
16. Munn Z, Moola S, Lisy K, Riitano D, Tufanaru C. Methodological guidance for systematic reviews of observational epidemiological studies reporting prevalence and cumulative incidence data. *Int J Evid Based Healthc*. 2015;13:147–53.
17. Nyaga VN, Arbyn M, Aerts M. Metaprop: a Stata command to perform meta-analysis of binomial data. *Arch Public Health*. 2014;72:39.
18. Tobian AA, Mehlotra RK, Malhotra I, Wamachi A, Mungai P, Koech D, et al. Frequent umbilical cord-blood and maternal-blood infections with *Plasmodium falciparum*, *P. malariae*, and *P. ovale* in Kenya. *J Infect Dis*. 2000;182:558–63.
19. Mockenhaupt FP, Rong B, Till H, Eggelte TA, Beck S, Gyasi-Sarpong C, et al. Submicroscopic *Plasmodium falciparum* infections in pregnancy in Ghana. *Trop Med Int Health*. 2000;5:167–73.
20. Walker-Abbey A, Djokam RRT, Eno A, Leke RFG, Titanji VPK, Fogako J, et al. Malaria in pregnant Cameroonian women: the effect of age and gravidity on submicroscopic and mixed-species infections and multiple parasite genotypes. *Am J Trop Med Hyg*. 2005;72:229–35.
21. Williams J, Njie F, Cairns M, Bojang K, Coulibaly SO, Kayentao K, et al. Non-falciparum malaria infections in pregnant women in west Africa. *Malar J*. 2016;15:53.

22. Ruh E, Bateko JP, Imir T, Taylan-Ozkan A. Investigation of pregnancy-associated malaria by microscopy, rapid diagnostic test and PCR in Bandundu, the Democratic Republic of Congo. *Trans R Soc Trop Med Hyg.* 2018;112:8–13.
23. Doritchamou JYA, Akuffo RA, Moussiliou A, Luty AJF, Massougbodji A, Deloron P, et al. Submicroscopic placental infection by non-falciparum *Plasmodium* spp. *PLoS Negl Trop Dis.* 2018;12:e0006279.
24. Kalinjuma AV, Darling AM, Mugusi FM, Abioye AI, Okumu FO, Aboud S, et al. Factors associated with sub-microscopic placental malaria and its association with adverse pregnancy outcomes among HIV-negative women in Dar es Salaam, Tanzania: a cohort study. *BMC Infect Dis.* 2020;20:796.
25. Vásquez A-M, Zuluaga-Idárraga L, Arboleda M, Usuga L-Y, Gallego-Marin C, Lasso A, et al. Malaria in pregnancy in endemic regions of Colombia: high frequency of asymptomatic and peri-urban infections in pregnant women with malaria. *Infect Dis Obstet Gynecol.* 2020;2020:2750258.
26. Taylor SM, van Eijk AM, Hand CC, Mwandagirwa K, Messina JP, Tshetu AK, et al. Quantification of the burden and consequences of pregnancy-associated malaria in the Democratic Republic of the Congo. *J Infect Dis.* 2011;204:1762–71.
27. Lee K-S, Cox-Singh J, Singh B. Morphological features and differential counts of *Plasmodium knowlesi* parasites in naturally acquired human infections. *Malar J.* 2009;8:73.
28. Joveen-Neoh WF, Chong KL, Wong CMVL, Lau TY. Incidence of malaria in the interior division of Sabah, Malaysian Borneo, based on nested PCR. *J Parasitol Res.* 2011;2011:104284.
29. Lee PC, Chong ETJ, Anderios F, Al Lim Y, Chew CH, Chua KH. Molecular detection of human *Plasmodium* species in Sabah using PlasmoNex™ multiplex PCR and hydrolysis probes real-time PCR. *Malar J.* 2015;14:28.
30. Ghinai I, Cook J, Hla TTW, Htet HMT, Hall T, Lubis IN, et al. Malaria epidemiology in central Myanmar: identification of a multi-species asymptomatic reservoir of infection. *Malar J.* 2017;16:16.
31. Jiram AI, Ooi CH, Rubio JM, Hisam S, Karnan G, Sukor NM, et al. Evidence of asymptomatic submicroscopic malaria in low transmission areas in Belaga district, Kapit division, Sarawak. *Malaysia Malar J.* 2019;18:156.
32. Fançonny C, Gamboa D, Sebastião Y, Hallett R, Sutherland C, Sousa-Figueiredo JC, et al. Various pfcr1 and pfmdr1 genotypes of *Plasmodium falciparum* cocirculate with *P. malariae*, *P. ovale* spp., and *P. vivax* in northern Angola. *Antimicrob Agents Chemother.* 2012;56:5271–7.
33. Daniels RF, Deme AB, Gomis JF, Dieye B, Durfee K, Thwing JJ, et al. Evidence of non-*Plasmodium falciparum* malaria infection in Kédougou. *Sénégal Malar J.* 2017;16:9.
34. Heinemann M, Phillips RO, Vinnemeier CD, Rolling CC, Tannich E, Rolling T. High prevalence of asymptomatic malaria infections in adults, Ashanti Region, Ghana, 2018. *Malar J.* 2020;19:366.
35. Murphy KJ, Conroy AL, Ddungu H, Shrestha R, Kyeyune-Byabazaire D, Petersen MR, et al. Malaria parasitemia among blood donors in Uganda. *Transfusion.* 2020;60:955–64.
36. Noordin NR, Lee PY, Mohd Bukhari FD, Fong MY, Abdul Hamid MH, Jelip J, et al. Prevalence of asymptomatic and/or low-density malaria infection among high-risk groups in Peninsular Malaysia. *Am J Trop Med Hyg.* 2020;103:1107–10.
37. Oriero EC, Olukosi AY, Oduwole OA, Djimde A, D'Alessandro U, Meremikwu MM, et al. Seroprevalence and parasite rates of *Plasmodium malariae* in a high malaria transmission setting of southern Nigeria. *Am J Trop Med Hyg.* 2020;103:2208–16.
38. Putaporntip C, Buppan P, Jongwutiwes S. Improved performance with saliva and urine as alternative DNA sources for malaria diagnosis by mitochondrial DNA-based PCR assays. *Clin Microbiol Infect.* 2011;17:1484–91.
39. WHO. Global technical strategy for malaria 2016–2030. Geneva: World Health Organization; 2015.
40. Bhatt S, Weiss DJ, Mappin B, Dalrymple U, Cameron E, Bisanzio D, et al. Coverage and system efficiencies of insecticide-treated nets in Africa from 2000 to 2017. *Elife.* 2015;4:e09672.
41. Zhou X, Li S-G, Chen S-B, Wang J-Z, Xu B, Zhou H-J, et al. Co-infections with *Babesia microti* and *Plasmodium* parasites along the China-Myanmar border. *Infect Dis Poverty.* 2013;2:24.
42. Scopel KKG, Fontes CJF, Nunes AC, Horta MF, Braga EM. High prevalence of *Plasmodium malariae* infections in a Brazilian Amazon endemic area (Apiacás-Mato Grosso State) as detected by polymerase chain reaction. *Acta Trop.* 2004;90:61–4.
43. Curado I, Dos Santos MR, de Castro Duarte AMR, Kirchgatter K, Branquinho MS, Bianchi Galati EA. Malaria epidemiology in low-endemicity areas of the atlantic forest in the Vale do Ribeira, São Paulo. *Brazil Acta Trop.* 2006;100:54–62.
44. Cucunubá ZM, Guerra AP, Rahirant SJ, Rivera JA, Cortés LJ, Nicholls RS. Asymptomatic *Plasmodium* spp. infection in Tierralta. *Colombia Mem Inst Oswaldo Cruz.* 2008;103:668–73.
45. Haanshuus CG, Chandy S, Manoharan A, Vivek R, Mathai D, Xena D, et al. A high malaria prevalence identified by PCR among patients with acute undifferentiated fever in India. *PLoS ONE.* 2018;13:e0193574.
46. Miguel RB, Albuquerque HG, Sanchez MCA, Coura JR, da Santos SS, da Silva S, et al. Asymptomatic *Plasmodium* infection in a residual malaria transmission area in the atlantic forest region: implications for elimination. *Rev Soc Bras Med Trop.* 2019;52:e20180537.
47. Dhangadamajhi G, Kar SK, Ranjit MR. High prevalence and gender bias in distribution of *Plasmodium malariae* infection in central east-coast India. *Trop Biomed.* 2009;26:326–33.
48. Weiss DJ, Lucas TCD, Nguyen M, Nandi AK, Bisanzio D, Battle KE, et al. Mapping the global prevalence, incidence, and mortality of *Plasmodium falciparum*, 2000–17: a spatial and temporal modelling study. *Lancet.* 2019;394:322–31.
49. Gnémé A, Guelbéogo WM, Riehle MM, Tiono AB, Diarra A, Kabré GB, et al. *Plasmodium* species occurrence, temporal distribution and interaction in a child-aged population in rural Burkina Faso. *Malar J.* 2013;12:67.
50. WHO. World malaria report 2017. Geneva: World Health Organization; 2017.
51. Mitchell CL, Brazeau NF, Keeler C, Mwandagirwa MK, Tshetu AK, Juliano JJ, et al. Under the radar: epidemiology of *Plasmodium ovale* in the Democratic Republic of the Congo. *J Infect Dis.* 2021;223:1005–14.
52. Guerra-Neira A, Rubio JM, Royo JR, Ortega JC, Auñón AS, Diaz PB, et al. *Plasmodium* diversity in non-malaria individuals from the Bioko Island in Equatorial Guinea (West Central-Africa). *Int J Health Geogr.* 2006;5:27.
53. Roman DNR, Rosalie NNA, Kumar A, Luther KMM, Singh V, Albert MS. Asymptomatic *Plasmodium malariae* infections in children from suburban areas of Yaoundé. *Cameroon Parasitol Int.* 2018;67:29–33.
54. Traore K, Thera MA, Bienvenu A-L, Arama C, Bonnot G, Lavoignat A, et al. Interaction between environment, nutrient-derived metabolites and immunity: a possible role in malaria susceptibility/resistance in Fulani and Dogon of Mali. *PLoS ONE.* 2017;12:e0189724.
55. Siffit KC, Geus D, Mukampunga C, Mugisha JC, Habarugira F, Fraundorfer K, et al. Asymptomatic only at first sight: malaria infection among school-children in highland Rwanda. *Malar J.* 2016;15:553.
56. Doolan DL, Dobaño C, Baird JK. Acquired immunity to malaria. *Clin Microbiol Rev.* 2009;22:13–36.
57. Kotepui M, Kotepui KU, Milanez GD, Masangkay FR. Global prevalence and mortality of severe *Plasmodium malariae* infection: a systematic review and meta-analysis. *Malar J.* 2020;19:1–13.
58. Kajubi R, Ochieng T, Kakuru A, Jagannathan P, Nakalembe M, Ruel T, et al. Monthly sulfadoxine–pyrimethamine versus dihydroartemisinin–piperaquine for intermittent preventive treatment of malaria in pregnancy: a double-blind, randomised, controlled, superiority trial. *Lancet.* 2019;393:1428–39.
59. Hopkins H, González IJ, Polley SD, Angutoko P, Ategeka J, Asimwe C, et al. Highly sensitive detection of malaria parasitemia in a malaria-endemic setting: performance of a new loop-mediated isothermal amplification kit in a remote clinic in Uganda. *J Infect Dis.* 2013;208:645–52.
60. Niang M, Thiam LG, Sow A, Loucoubar C, Bob NS, Diop F, et al. A molecular survey of acute febrile illnesses reveals *Plasmodium vivax* infections in Kedougou, southeastern Senegal. *Malar J.* 2015;14:281.
61. Doctor SM, Liu Y, Anderson OG, Whitesell AN, Mwandagirwa MK, Muwonga J, et al. Low prevalence of *Plasmodium malariae* and *Plasmodium ovale* mono-infections among children in the Democratic Republic of the Congo: a population-based, cross-sectional study. *Malar J.* 2016;15:350.
62. Steenkeste N, Rogers WO, Okell L, Jeanne I, Incardona S, Duval L, et al. Sub-microscopic malaria cases and mixed malaria infection in a remote area of high malaria endemicity in Rattanakiri province, Cambodia: implication for malaria elimination. *Malar J.* 2010;9:108.

63. Bruce MC, Day KP. Cross-species regulation of malaria parasitaemia in the human host. *Curr Opin Microbiol.* 2002;5:431–7.
64. Bruce MC, Day KP. Cross-species regulation of *Plasmodium* parasitemia in semi-immune children from Papua New Guinea. *Trends Parasitol.* 2003;19:271–7.
65. Collins WE, Jeffery GM. *Plasmodium malariae*: parasite and disease. *Clin Microbiol Rev.* 2007;20:579–92.
66. Schumacher R-F, Spinelli E. Malaria in children. *Mediterr J Hematol Infect Dis.* 2012;4:e2012073.

Publisher's Note

Springer Nature remains neutral with regard to jurisdictional claims in published maps and institutional affiliations.

Ready to submit your research? Choose BMC and benefit from:

- fast, convenient online submission
- thorough peer review by experienced researchers in your field
- rapid publication on acceptance
- support for research data, including large and complex data types
- gold Open Access which fosters wider collaboration and increased citations
- maximum visibility for your research: over 100M website views per year

At BMC, research is always in progress.

Learn more biomedcentral.com/submissions

