

RESEARCH

Open Access

# Significant variance in genetic diversity among populations of *Schistosoma haematobium* detected using microsatellite DNA loci from a genome-wide database

Travis C Glenn<sup>1\*</sup>, Stacey L Lance<sup>2</sup>, Anna M McKee<sup>1,3</sup>, Bonnie L Webster<sup>4,8</sup>, Aidan M Emery<sup>4</sup>, Adhemar Zerlotini<sup>5,7</sup>, Guilherme Oliveira<sup>5</sup>, David Rollinson<sup>4</sup> and Brant C Faircloth<sup>6</sup>

## Abstract

**Background:** Urogenital schistosomiasis caused by *Schistosoma haematobium* is widely distributed across Africa and is increasingly being targeted for control. Genome sequences and population genetic parameters can give insight into the potential for population- or species-level drug resistance. Microsatellite DNA loci are genetic markers in wide use by *Schistosoma* researchers, but there are few primers available for *S. haematobium*.

**Methods:** We sequenced 1,058,114 random DNA fragments from clonal cercariae collected from a snail infected with a single *Schistosoma haematobium* miracidium. We assembled and aligned the *S. haematobium* sequences to the genomes of *S. mansoni* and *S. japonicum*, identifying microsatellite DNA loci across all three species and designing primers to amplify the loci in *S. haematobium*. To validate our primers, we screened 32 randomly selected primer pairs with population samples of *S. haematobium*.

**Results:** We designed >13,790 primer pairs to amplify unique microsatellite loci in *S. haematobium*, (available at <http://www.ncbi.nlm.nih.gov/ajournals/ajarticle/123456789/abstract>). The three *Schistosoma* genomes contained similar overall frequencies of microsatellites, but the frequency and length distributions of specific motifs differed among species. We identified 15 primer pairs that amplified consistently and were easily scored. We genotyped these 15 loci in *S. haematobium* individuals from six locations: Zanzibar had the highest levels of diversity; Malawi, Mauritius, Nigeria, and Senegal were nearly as diverse; but the sample from South Africa was much less diverse.

**Conclusions:** About half of the primers in the database of *Schistosoma haematobium* microsatellite DNA loci should yield amplifiable and easily scored polymorphic markers, thus providing thousands of potential markers. Sequence conservation among *S. haematobium*, *S. japonicum*, and *S. mansoni* is relatively high, thus it should now be possible to identify markers that are universal among *Schistosoma* species (i.e., using DNA sequences conserved among species), as well as other markers that are specific to species or species-groups (i.e., using DNA sequences that differ among species). Full genome-sequencing of additional species and specimens of *S. haematobium*, *S. japonicum*, and *S. mansoni* is desirable to better characterize differences within and among these species, to develop additional genetic markers, and to examine genes as well as conserved non-coding elements associated with drug resistance.

**Keywords:** Africa, Differentiation,  $F_{ST}$ , Genomic, Microsatellites, Primer database, *Schistosoma haematobium*, Urogenital schistosomiasis

\* Correspondence: [travisg@uga.edu](mailto:travisg@uga.edu)

<sup>1</sup>Department of Environmental Health Science, University of Georgia, Athens 30602 GA, USA

Full list of author information is available at the end of the article

## Background

Schistosomiasis is caused by blood flukes of the genus *Schistosoma*, affecting about 210 million people inhabiting 76 countries with tropical and sub-tropical climates [1]. Urogenital schistosomiasis caused by *Schistosoma haematobium* affects 112 million people, with cases widely distributed across Africa [2]. Several efforts are underway to control *S. haematobium*, including the Schistosomiasis Consortium for Operational Research and Evaluation (SCORE) program (<http://score.uga.edu/index.html>), which was established in 2008 to answer strategic questions about schistosomiasis control and elimination. New tools are needed to monitor changes in population structure of the *Schistosoma* parasite subjected to various levels of drug pressure [3]. Molecular tools, in particular, will allow researchers to determine whether changes in gene frequencies provide insight into the effectiveness of treatment, understand the impacts of treatment on the gene pool and population structure of *Schistosoma* parasites, and establish whether movement of humans from refugia or non-treated areas introduces new parasites into local populations [4].

Currently, only a single drug, praziquantel, treats schistosomiasis [5]. Cure rates vary but rarely reach 100%, and some infections may persist even with frequent treatment [6]. One goal of the SCORE program is to understand and document whether changes in drug tolerance arise during different drug administration programs, and specific genetic assays are needed to better monitor population structure and potential changes in *Schistosoma* populations under praziquantel treatment.

Genetic resources exist for studying these aspects of *S. mansoni* and *S. japonicum*, due to the availability of the full genome sequence for each [7,8] and the relatively high level of research devoted to these species [4]. The recently published genome sequence for *S. haematobium* [9] was not available when we initiated this research, but even with this important new resource, relatively few validated genetic markers exist to quantify and analyze genetic variation of *S. haematobium* populations, creating a significant knowledge gap for this species. Because several large-scale SCORE projects focus on *S. haematobium*, obtaining larger-scale genetic and genomic resources enabling the study of *S. haematobium* at the population-level is desirable. Thus, we produced a large-scale database with a validated subset of DNA markers for *S. haematobium* to create the resources needed for future work by both the SCORE program and the larger research community.

Here, we focused on characterizing a type of highly variable DNA marker in widespread use for more than 20 years - microsatellite DNA loci [10] - which are the most actively used genetic marker within the schistosomiasis research community reviewed by Rollinson *et al.* [11].

Although 16 microsatellite loci have been developed for *S. haematobium* and seven have been used in large-scale studies (Gower *et al.* [3,12]), only three have proven robust in our hands. We sought to develop numerous microsatellite loci from throughout the *S. haematobium* genome for long-term use, and to identify a superior, small subset of 10–20 loci for immediate, routine use. Thus, our general strategy was to collect DNA sequence data from relatively long-reads of random DNA fragments totaling about 1x genome coverage using a Roche 454 FLX Genome Sequencer and to identify microsatellite DNA markers from the sequences using two different techniques. We created a database containing thousands of potential microsatellite markers, and we validated a random selection of 32 markers from the database using DNA collected from 6 widely dispersed populations of *S. haematobium*. We show that the markers in the database can be used to obtain highly variable microsatellite DNA genotypes of *S. haematobium* and enable population-level analyses across the range of *S. haematobium* in Africa.

## Methods

### *Schistosoma haematobium* samples

#### Genome sequencing sample

Because it is best to use DNA derived from single genotypes for genome sequencing, 90 laboratory bred *Bulinus wrighti* snails were individually exposed to single *S. haematobium* miracidia collected from urine samples of school children in Zanzibar. A large number of snails were used because of the expected low proportion of successful infections from single miracidia and the possibility of snail death prior to sufficient clonal cercariae being collected. The infected snails were maintained in the laboratory for 33 days in standard conditions (water-filled trays at 27°C, 12 h/12 h light/dark), and then transferred to individual vessels and placed in the dark. The individual snails were placed in fresh snail water and brought into the light every 2–3 days to stimulate shedding of the cercariae. Eight snails were found shedding cercariae and over a period of 28 days, cercariae from each individual snail were collected using a pipette to capture them in a minimal water volume. Cercariae from each snail were collected in individual 1.5 ml microcentrifuge tubes, centrifuged and stored at –20°C after excess water was removed. Cercariae from each individual snail collected over multiple days were combined for the extraction procedure. The results presented here are based on DNA purified from 3703 cercariae (the total cercariae collected from a single snail over a 28 day period) using DNeasy blood and tissue kits (Qiagen, Valencia, CA). We eluted DNA from the DNeasy columns using two aliquots of 50 µL of Buffer AE, according to manufacturer instructions, and

the DNA purification procedure yielded approximately 3.1 µg of DNA, measured with a Nanodrop ND1000 spectrophotometer.

#### Genetic survey samples

To identify polymorphic microsatellite DNA loci in the random subset and survey genetic variation among *S. haematobium* populations, adult worms from six African countries (Table 1) were obtained from the schistosomiasis collection at the Natural History Museum (SCAN) [13]. These isolates had been passaged through golden hamsters and *B. wrightii* in the Natural History Museum (NHM) laboratory and stored in liquid nitrogen. DNA was extracted individually from six adult male and six adult female worms from each of the six localities (Table 1) using the DNeasy blood and tissue kit (Qiagen, Inc.), as described above. To conserve the limited supply of DNA, we performed whole genome amplifications (WGA) of 1 µL (~10 ng) purified DNA using the REPLI-g UltraFast mini Kit (Qiagen, Crawley, UK), and we diluted the resulting WGA amplifications 1:24 prior to using diluted, WGA DNA as a template for microsatellite locus genotyping.

#### 454 sequencing

To provide low coverage genome sequences of *S. haematobium* and to identify microsatellite loci, we converted the DNA extracted from the single, pooled sample of 3703 cercariae shed from an individual snail into a 454 sequencing library by ligating Roche 454 titanium blunt MID-tagged adaptors (RL kits were not yet available) to the DNA according to the manufacturer's instructions. Due to limited amounts of genomic DNA, we reduced the stringency of the 454 size-selection conditions, prior to sequencing, to retain smaller fragments in the resulting sequencing library. We sequenced the size-selected library using titanium chemistry on a Roche 454 FLX Genome Sequencer according to the manufacturer's instructions.

#### Sequence filtering, assembly, and microsatellite identification

Following sequencing, we trimmed low quality sequence data using default parameters of the Roche v2.3 analysis

pipeline, and we assembled trimmed reads to contigs using gsAssembler v.2.3 software. We used RepeatMasker (<http://www.repeatmasker.org>) and MsatCommander [14] to identify independently microsatellite loci within resulting contigs, and we merged results of the two searches to generate a general feature format (GFF) file containing the microsatellite information.

#### Comparative mapping of *S. haematobium* contigs to the *S. mansoni* genome

Because the *S. haematobium* genome sequence was not publicly available at the time and because we wanted to (1) determine the proximity of microsatellite loci to annotated or putative genes, (2) select putatively unlinked microsatellite loci for testing, and (3) compare the frequency and size distribution of microsatellite motifs across species, we mapped the *S. haematobium* contigs to the *S. mansoni* genome using SHRIMP [15] and BWA [16]. This approach assumes significant synteny between the two species, which the mapping results suggest is true - an observation also reported by Young *et al.* [9]. We then designed primers adjacent to microsatellites having sufficient flanking sequence (> 20 bp) using Primer3 [17] and a modified version of MsatCommander (<http://github.com/faircloth-lab/msatcommander-gs>), which designs tagged primers for polymorphism testing using a customized Primer3 workflow. We converted this information to the GFF format and put all the information together in a single GFF file.

We selected a random subset of 32 tagged primers from the database (Additional file 1: Table S1) for polymorphism testing by choosing primers designed from the subset of contigs containing only one microsatellite locus and mapping onto the *S. mansoni* genome (using BWA) with a map quality score of  $\geq 30$ .

#### Testing polymorphism and surveying genetic variation in *S. haematobium*

We screened 32 primer pairs for amplification and polymorphism against DNA from eight of the 72 *S. haematobium* specimens. We performed PCR amplification in 12.5 µL volume reactions with 10 mM Tris pH 8.4, 50 mM KCl, 25.0 µg/ml BSA, 0.36 µM unlabeled primer, 0.04 µM tag labeled primer, 0.36 µM universal

**Table 1 Sampling details for the six populations of *Schistosoma haematobium* studied**

Population	Latitude/Longitude	ID	Year sampled	Source
Senegal	16°37'00"N/15°01'60"W	NHM3292	1995	Human urine
Zanzibar	05°58'15"S/39°18'29"E	NHM3739	1999	Human urine
Malawi	14°13'60"S/33°33'00"E	NHM880	1998	Unknown
Mauritius	20°09'53"S/57°30'47"E	NHM2576	1992	Human urine
Nigeria	11°57'54"N/08°15'00"E	NHM682	1985	<i>Bulinus truncatus</i>
South Africa	27°00'00"S/32°50'00"E	NHM812	1986	Unknown

dye-labeled primer, 3.0 mM MgCl<sub>2</sub>, 0.8 mM dNTPs, 0.5 units JumpStart Taq DNA Polymerase (Sigma), and ~20 ng WGA DNA template using an Applied Biosystems GeneAmp 9700. We amplified all loci using one of three touchdown PCR protocols [18], TD65, TD60, or TD55 (Table 2). Each touchdown protocol included a 10°C span of annealing temperatures (65-55°C, 60°C-50°C, and 55-45°C respectively), and touchdown cycling parameters consisted of 20 cycles of 95°C for 30s, highest annealing temperature (decreased by 0.5°C per cycle) for 30s, and 72°C for 30s; and 20 cycles of 95°C for 30s, lowest

annealing temperature for 30s, and 72°C for 30s. We ran all PCR products on an ABI-3730xl sequencer with Naurox size standard prepared as described in DeWoody *et al.* [19] except that all Naurox reverse primers started with GTTT. We used Genemapper version 4.0 (Applied Biosystems) to analyze the results and determine genotypes.

Fifteen primer pairs (47%) amplified high quality, unambiguous, PCR products and displayed polymorphisms. Using these 15 loci, we genotyped 72 individuals (12 individuals sampled from 6 locations) using the reaction conditions described above with WGA DNA

**Table 2 Details for 15 polymorphic microsatellite loci developed for *Schistosoma haematobium***

Locus	Primer Sequence 5' --> 3'	Repeat motif	T <sub>A</sub>	Size (bp)	N	k
Shae_01	F: †GCATCCAATTTCTGACAC R: *CCACATTAGGCCAACAAG	AAT	TD60	257 - 307	65	12
Shae_02	F: *TTAGTGTGTTGGCTTCAAC R: †CCTCGAATGAAATCCTGAC	AAT	TD60	183 - 225	69	9
Shae_03	F: †GCTGAGCTTGAGATTG R: *CTTCTGTCCCATCGATACC	AAT	TD55	291 - 334	62	15
Shae_04	F: †CCCATCGTGATATTAAG R: *TCTAGTCGTCTGGGATCC	AAT	TD65	289 - 325	70	10
Shae_05	F: *TGTGCACAAGAAAGATTAATG R: †ACGACAATGTTGCAAGTTC	AAT	TD65	288 - 319	68	10
Shae_06	F: †GGTGGATTACGCAATAG R: *TTTAATCAACCGGGTGTC	AC	TD65	333 - 347	67	8
Shae_07	F: *TCCAAGCACCATTATCAAG R: †ACGGAAACTTGTTGAAATG	AAT	TD65	315 - 330	66	6
Shae_08	F: *CTAAACTGGCAAGATTC R: †CAACGTGCCTTTATTC	AAT	TD65	299 - 330	68	11
Shae_09	F: †GGGATGTATGCAGACTTG R: *TTGTTTGGCTGCAGTAAC	AAT	TD65	213 - 256	68	13
Shae_10	F: †CGCATGCATACCTATCTCC R: *GCTTATCAGGCCTATCTCC	AAT	TD65	198 - 213	69	6
Shae_11	F: *TTGGTTTAGAAATTACATCACC R: †CCAACAATATTAATGGACAGC	ATC	TD65	207 - 222	66	5
Shae_12	F: †CGTCTTAGTGAGCCAGATG R: *CTCGTGGACATCATCAG	AAC	TD65	257 - 278	68	6
Shae_13	F: *GAGCAGCTATTTCTGATCG R: †ACCGTGGACAGTTCATCAG	AAT	TD60	183 - 225	69	12
Shae_14	F: *GTCCTCCTCCCTCTTTG R: †CACATTCGTCCTAGATATCG	ACTC	TD65	210 - 254	67	10
Shae_15	F: *CTTTCAGTAGGATTTGTTG R: †CGACGTCAAGCACTGTAC	ATC	TD65	300 - 322	67	9

\* indicates CAG tag (5'- CAGTCGGCGTCATCA-3').

† indicates pigtail (5'- GTTT-3').

The annealing temperature (T<sub>A</sub>) where TD65, TD60, and TD55 indicates touchdown protocols with a highest annealing temperature of 65°C, 60°C, and 55°C, respectively; **size** indicates the range of sequenced alleles in base pairs plus the length of the CAG tag; the number of individuals genotyped out of 72 is **N**; **k** is the number of alleles observed.

(Table 2). To test for potentially negative effects of using WGA DNA, we also screened genomic DNA from 24 individuals at 3 loci (Shae\_03, Shae\_13, and Shae\_15). We did not detect differences between genotypes derived from genomic DNA or WGA DNA.

#### **Analysis of Microsatellite diversity within and among populations**

To measure the degree of genetic polymorphism within populations, we calculated expected heterozygosity ( $H_E$ ), observed heterozygosity ( $H_O$ ), and mean number of alleles per locus (MNA) using MICROSATELLITE TOOLKIT [20]. We tested for deviations from Hardy-Weinberg equilibrium (HWE) in  $H_E$  and  $H_O$  using tests of heterozygote deficiency (U-test) at an  $\alpha$  of 0.05 in GENEPOP web version 4.0.10 [21,22]. To estimate the degree of inbreeding within populations, we calculated mean  $F_{IS}$  [23] for each population in GENEPOP, and we used GenAEx 6 [24] to calculate the number of private alleles within each population.

Although many population differentiation statistics have been proposed for use with microsatellites, we chose to calculate and compare two measurements of genetic differentiation:  $F_{ST}$  and  $D_{est}$ .  $F_{ST}$  is relatively common in the literature but is often criticized because of its tendency to underestimate genetic differentiation when markers are highly variable, which is often the case with microsatellites [25,26].  $R_{ST}$  [27] is also commonly reported in studies that use microsatellite markers because it is not affected by the amount of genetic variability within populations. However,  $R_{ST}$  does not perform well when sample sizes are small [28], and we opted not to calculate this parameter in our study. In place of  $R_{ST}$ , we chose to calculate  $D_{est}$  [29], which does not underestimate differentiation when markers are highly variable [29]. We used GenAEx 6 to calculate pairwise  $F_{ST}$  using analysis of molecular variance (AMOVA) with 999 permutations, and we used SMOGD [30] to calculate pairwise, harmonic mean  $D_{est}$  values. To test for a pattern of isolation by distance (IBD), we used Isolde in GENEPOP to examine the correlation between Slatkin's linearized  $F_{ST}$  [ $F_{ST} / (1 - F_{ST})$ ] [27] and the respective geographic distance between sampling locations.

We used GenAEx 6 to determine the probability of identity (PI), which describes how well a locus can distinguish among genetically different individuals (a low PI indicates powerful genetic markers). To identify loci with potential null alleles and estimate null allele frequencies we used MICROCHECKER v2.2.3 [31] in combination with the Brookfield estimator [32], which assumes that there are no homozygote null alleles and that the absence of a genotype is caused by degraded DNA, genotyping error, etc. To determine which loci provided the most information about population

differentiation, we used a log-likelihood ratio ( $G$ ) based exact test in GENEPOP, and we compared the statistical significance ( $\alpha = 0.001$ ) of pairwise  $F_{ST}$  values for each locus to the respective statistical significance of pairwise  $F_{ST}$  values across all loci. Because all across-loci pairwise  $F_{ST}$  values were statistically significant, we counted the number of populations with pairwise  $F_{ST} P > 0.001$  ( $\alpha = 0.001$ ) to measure disagreement between locus-specific estimates of population differentiation and population-specific estimates of differentiation. Across all populations we calculated mean allelic richness using MICROSATELLITE ANALYZER (MSA) v.4.05 [33].

To provide a relative rank of the utility of each locus to all other loci, we selected several desirable characteristics for ranking, which we weighted equally: low PI, low number of populations having null alleles, low number of disagreements with statistical significance of population structure, and high mean number of alleles. We then scored all loci, by ranking each locus within all categories from most desirable (1) to least desirable (15). We added rank values together to create a final score for each locus, and we ordered loci from lowest values of this final score (most informative) to highest (least informative).

## **Results and discussion**

### **454 sequences**

We obtained 1,058,114 reads totaling 299,226,826 bases from 454 sequencing. Average read length was 283 bases, which is lower than usual for titanium sequencing but is expected due to our reduction of size-selection stringency during library preparation. The *S. haematobium* genome is about 385 megabases (Mb; [9]), which is between *S. mansoni* at 363 Mb [7] and *S. japonicum* at 397 Mb [8]. Thus, the 454 sequences we obtained represent about 0.78x coverage. This low-level of coverage is ideal for discovering a large proportion of unique loci (i.e., each read has a high probability of sampling part of the genome for the first time), but is not, on its own, intended for genome assembly because only about half of the genome will be included in the sequences obtained. Even at this low coverage, some DNA fragments will be sequenced multiple times, especially repetitive elements. After read filtering, sequence assembly yielded 11,166 contigs >500 bases in length with an average size of 682 bases, an N50 of 642 bases, a maximum contig size of 5,900 bases, and 89% of bases  $\geq$  Q40.

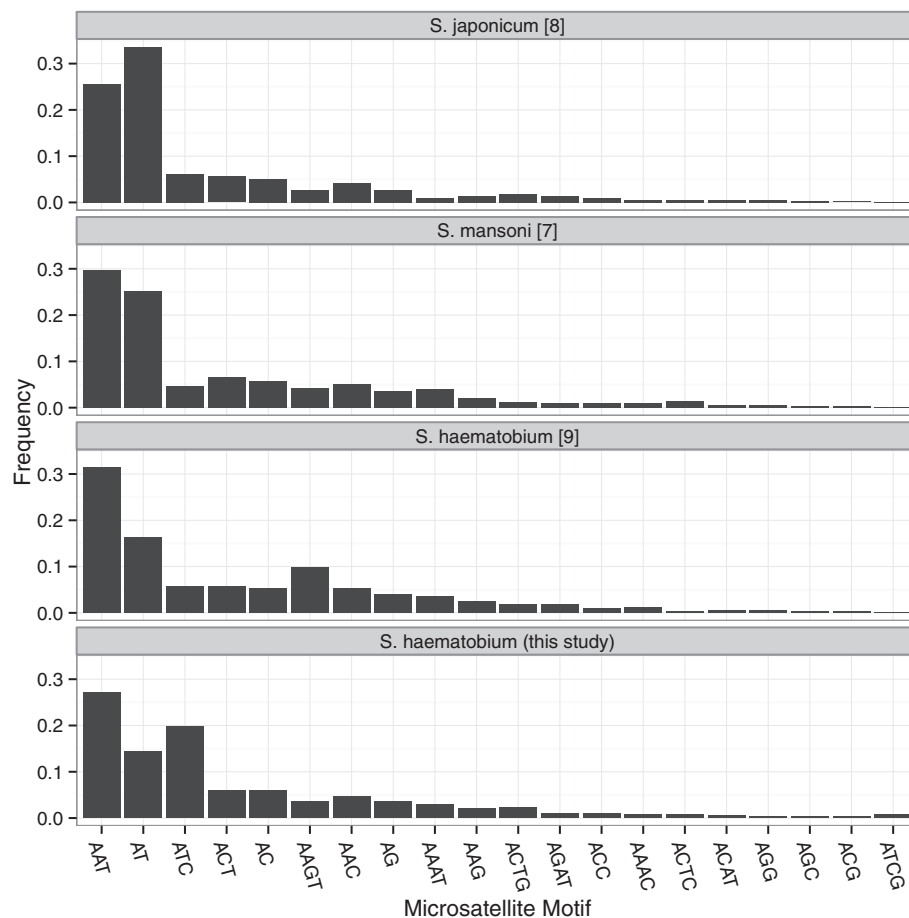
### **Comparison of microsatellites among Schistosoma genomes**

We determined the frequency distribution of microsatellites by motif and repeat lengths for all microsatellites found in the *S. haematobium* 454 reads (this study) and the *S. haematobium* genome (obtained using Illumina sequencing [9]). In addition, we examined all

di-, tri-, and tetra-nucleotide repeats in detail and compared them with *S. japonicum* and *S. mansoni* (Figure 1; Additional file 2: Table S2). *Schistosoma* species differed markedly in the frequency of AT repeats with AT repeats being the most common in *S. japonicum*, second most common in *S. mansoni*, and second or third most common in *S. haematobium*, depending on which data (454 or Illumina) are used. In comparison to the published *S. haematobium* genome (from a strain in long term culture originally isolated in Egypt and sequenced on the Illumina platform [9]), our sequences (from an individual deriving from Zanzibar and sequenced on the 454 platform), there are markedly more ATC repeats and fewer AAGT repeats in the 454 sequences. The frequency of AAGT repeats found in the 454 sequences is more similar to the frequencies found in *S. mansoni* and *S. japonicum* genomes. Thus, it is possible that the current full genome assembly of *S. haematobium* overestimates AAGT frequency. In contrast, the 454 sequences show far more ATC repeats than any of the full genome assemblies. Thus, the

ATC repeats are either systematically overestimated in the 454 reads or underestimated in the Illumina reads used for *S. haematobium* and potentially all three *Schistosoma* genome assemblies produced so far.

SchistoDB [34]; <http://SchistoDB.net> provides a rich resource for comparisons among the three schistosomes with genome sequences available. Our sequences add to the possible comparisons, but our results illustrate that some caution should be used in these comparisons. There are many differences among sequencing platforms. Some of these differences are known from the chemistry and technologies employed within the instruments, but it is often difficult to estimate how these will impact specific research projects [35]. Multiple studies have, therefore, been conducted to directly compare sequencing results from multiple platforms e.g., [36-38]. Sequencing of additional specimens and sequencing with other chemistries and platforms is needed to determine whether the differences we observed are artifacts of the chemistry and platforms used or reflect biological differences among or within species.



**Figure 1** Locations of *Schistosoma haematobium* population samples. Vertical bars represent allelic richness, and horizontal bars represent heterozygosity (see Table 1 for location details).

### Microsatellite primers and database

We used two different approaches to identify microsatellites and design primers for those loci. In the first approach, the programs RepeatMasker and MsatCommander identified 18,235 and 17,739 microsatellites, respectively. SHRiMP mapping resulted in 144,450 reads mapped from the *S. haematobium* data to the *S. mansoni* genome. For each microsatellite within the mapped reads, we extracted 500 bp upstream and downstream of its location from the *S. mansoni* genome to identify primers adjacent to each locus. Primer3 yielded 13,790 pairs of primers for these loci.

In the second approach, microsatellite loci were identified and primers were designed from the *S. haematobium* 454 sequences using a modified version of MsatCommander that is tuned to genome-scale datasets. A total of 113,757 microsatellite loci were identified but collapsed into 84,754 loci that were >50 bp apart. Of those, 35,691 had >20 bp of preceding and trailing sequence (i.e., enough for potential primer design). The 454 reads were then mapped onto the *S. mansoni* genome (v 3.1), resulting in 114,015 reads with a BWA mapQ score  $\geq 30$ . We then filtered those reads to include only those that had one matching location in the *S. mansoni* genome, contained a microsatellite, and had >20 bases of flanking sequence on each side of the repeat, resulting in 3,656 reads. From those, 3,148 primer pairs were designed, of which 1,479 were compatible with 5' CAG-tags (Table 2). We further examined the map locations in *S. mansoni* to retain only one primer pair per scaffold, resulting in 403 primer pairs (Additional file 3: Table S3). We then randomized the list of 403 primer pairs and empirically tested the first 32.

We compiled results from analyses above into lists and searchable databases for distribution. Primers for microsatellite loci, their location within the genome and a BLAST [Alschul *et al.* 1997] server are available at: <http://www.cebio.org/projetos/schistosoma-haematobium-genome>.

The different approaches and lists of primer pairs may be useful for a variety of purposes. For example, the first approach demonstrates that large numbers of microsatellite repeats can be obtained using commonly available bioinformatics tools and that many of the *S. haematobium* reads can be mapped directly to the *S. mansoni* genome. Because the *S. haematobium* genome is more similar to the *S. mansoni* than *S. japonicum* genome [9,39], the 13,790 loci identified from the SHRiMP alignment represent a large potential pool of markers that could be mapped to *S. mansoni*, which is 4 times larger than the 3,148 primer pairs that were mapped to *S. mansoni* from strategy 2. The major advantage of strategy 2, however, is that 1,479 primer pairs could easily be used with CAG-tags for low-cost, 3-primer PCR [40], and 403 of those could be used for linkage mapping in *S. haematobium* or *S. mansoni*. Some may find it curious

why linkage mapping would be necessary when a genome sequence is available, but the *Schistosoma* genomes are not yet finished (i.e., not all sequences are assembled into chromosomes) and finishing generally relies upon data that are independent of the sequences to validate the computational assembly of the short DNA sequence reads. Finally, these primers provide potential markers for diagnosis, epidemiology and phylogenetic analysis of *Schistosoma* species cf., [41-43].

### Population genetic survey

#### DNA sample quality

Fifteen of the 32 primer pairs we screened yielded high-quality polymorphic markers with the initial set of 8 DNA samples. We used these 15 polymorphic markers to screen DNA from 72 *S. haematobium* individuals (six male worms and six female worms each from six locations; Table 1, Table 2, Additional file 4: Table S4). Three worms appeared to have low-quality DNA or contained significant amounts of PCR inhibitors (we obtained genotypes from zero, four, and four loci in each these three individuals). All other samples yielded data from at least 10 loci (one individual each producing amplicons at 10, 11 and 12 loci, all others having genotypes from 14 or all 15 loci). We concluded that the three DNA samples that yielded few or no genotypes were of low quality, and we excluded them from further analysis. We retained the three samples scored at 10–12 loci because it is possible the failure of loci to amplify in these samples results from the presence of null alleles. However, it is also possible that the failure of loci to amplify in these samples results only from their lower quality, potentially inflating null allele estimates. Thus, primer pairs with reduced numbers of individuals scored (Table 2) may reflect a higher frequency of null alleles or reduced robustness of the PCR conditions to amplify lower-quality DNA.

WGA of *Schistosoma* DNA has been demonstrated to provide reliable templates for genotyping microsatellite loci [44]. WGA is useful because it increases the small amount of DNA obtained from individual worms, eggs, cercariae or miracidia to quantities that allow multiple PCRs, replicate PCRs and thus estimation of genotyping error rates [44]. However, in the current study, while using WGA DNA resulted in more template for PCRs, and thus more PCRs per sample, it did not increase the number of usable genotypes. In fact, we had complete congruence in genotypes called from WGA and genomic DNA suggesting WGA was unnecessary, and only helped us in confirming that the genotypes were repeatable. It is possible that inhibitors were carried through WGA for the 6 samples that yielded relatively few genotypes, but it is also possible that the starting DNA was not sufficient in these samples and yielded amplification

**Table 3 Summary of genetic variation at 15 microsatellite loci in 6 populations of *Schistosoma haematobium***

Population	N	H <sub>E</sub>	H <sub>O</sub>	A	P	F <sub>IS</sub>
Senegal	12	0.51 ±0.06	0.51 ±0.04	3.3	7	-0.01
Zanzibar	12	0.70 ±0.04	0.63 ±0.04	5.7	18	0.10
Malawi	10	0.60 ±0.07	0.65 ±0.04	3.9	8	-0.08
Mauritius	11	0.62 ±0.04	0.65 ±0.04	4.1	6	-0.06
Nigeria	12	0.58 ±0.06	0.58 ±0.04	4.4	7	0.01
South Africa	12	0.06 ±0.04	0.06 ±0.02	1.3	3	-0.02

N is the sample size (number of adult *S. haematobium* genotyped, DNA from 6 males and 6 females was sampled), H<sub>E</sub> is the expected heterozygosity (calculated as Nei's unbiased gene diversity (Nei, 1987)) ± the inter-locus standard deviation, H<sub>O</sub> is the observed heterozygosity ± the interlocus standard deviation, A is the mean number of alleles, P is the number of private alleles, and F<sub>IS</sub> is the Weir and Cockerham (1984) estimate for inbreeding.

of only part of the genome instead of the whole genome. In the future, if there is concern that genomic DNA is of low quality and may result in null alleles and poor amplification we would recommend initially trying WGA on a small subset of samples to see if amplification is improved. Further work on the specific conditions where WGA will improve genotyping for various *Schistosoma* samples and species is needed.

#### Genetic variability of *Schistosoma haematobium*

We analyzed genotypes of 69 individuals across the six locations sampled (Table 1). The total number of alleles per locus ranged from 5 for Shae\_11 to 15 for Shae\_03 (Table 2). The largest number of alleles was in the Zanzibar population (average = 5.7, Table 3), whereas the lowest number of alleles occurred in the South African population (average = 1.3, Table 3). South Africa was also an outlier for expected heterozygosity (6%, Table 3); all other populations had an H<sub>E</sub> between 51% and 70%. We did not find differences between expected and observed heterozygosities ( $P = 0.356$ ), and no populations showed evidence of departures from HW. We identified private alleles in all six populations (Table 3), occurring at a minimum frequency of 0.10. Four populations had slightly negative F<sub>IS</sub> values whereas two had slightly positive F<sub>IS</sub> values (Table 3), but none were significantly different from zero. The limited sample sizes used here limit the power to detect deviations from HW, but the lack of trends in one direction or the other suggest that neither the markers nor samples were systematically biased.

The variability that we find with these 15 polymorphic loci is likely to be as high or higher than that found with loci developed previously e.g., [3,45]. It is important to note that our sampling is broader and shallower than previous studies of microsatellite loci in *S. haematobium* [3,45]. Direct comparisons of these two primer sets genotyped in the same samples will be needed to

determine definitively which are more powerful. Of critical importance, however, is that the loci we describe are not just variable, but the loci are also easy to amplify and score (see below). We are now routinely using multiplexes of these 15 loci to genotype *S. haematobium* for a variety of ongoing studies and all 15 loci are proving robust for all *S. haematobium* life cycle stages and are easily scored. Thus, the primers identified in Table 2 provide a significant new resource for researchers of *S. haematobium*.

#### Population structure of *Schistosoma haematobium*

Pairwise F<sub>ST</sub> values suggest strong population structure (Table 4). The most differentiated populations were Senegal and South Africa (F<sub>ST</sub> = 0.65,  $P = 0.001$ ), whereas the least differentiated populations were Zanzibar and Mauritius (F<sub>ST</sub> = 0.16,  $P = 0.001$ ). All pairwise F<sub>ST</sub> values were statistically significant at an alpha of 0.001. We did not detect a pattern of isolation by distance ( $R^2 = 0.01$ ,  $P = 0.35$ ). Pairwise harmonic mean D<sub>est</sub> values suggested strong population structure and exhibited a pattern of differentiation similar to pairwise F<sub>ST</sub> values, suggesting South Africa and Senegal as the most differentiated populations (D<sub>est</sub> = 0.73) and Zanzibar and Mauritius as the least differentiated populations (D<sub>est</sub> = 0.18). P-values are not available for estimates of D<sub>est</sub>, but their similarity to F<sub>ST</sub> and large value suggests that *S. haematobium* from all of the sampled localities should be viewed as significantly different.

These results are consistent with previous findings [3,34,35,45]. Gower *et al.* [45] found an average F<sub>ST</sub> of 0.173 among the five countries they investigated (Cameroon, Kenya, Mali, Niger, and Tanzania). Our F<sub>ST</sub> values are higher than those found by Gower *et al.* [45], but it is important to note that the markers (loci) used and sampling intensity heavily influence resulting measures of differentiation [26]. Additionally, highly polymorphic microsatellite loci constrain F<sub>ST</sub> [26], which makes measures such as D<sub>est</sub> more appropriate [29]. Despite these constraints, F<sub>ST</sub> and D<sub>est</sub> values are quite similar in this study (Table 4). Indeed, we would draw the same conclusions from either measure – there is very high differentiation among all populations, but differentiation is especially high between South Africa and all other populations. We would also draw the same conclusion of significant population differentiation among *S. haematobium* populations in different African countries from the results of Gower *et al.* [45] or our study.

#### Ranking loci by information content

Although all of the loci we tested are useful, some researchers may choose to use only a subset of these 15



**Table 4 Pairwise differentiation among populations of *Schistosoma haematobium***

Populations	Senegal	Zanzibar	Malawi	Mauritius	Nigeria	South Africa
Senegal		0.41	0.64	0.35	0.28	0.73
Zanzibar	0.27		0.25	0.18	0.33	0.53
Malawi	0.36	0.17		0.32	0.44	0.33
Mauritius	0.29	0.16	0.22		0.30	0.51
Nigeria	0.26	0.19	0.22	0.20		0.44
South Africa	0.65	0.50	0.46	0.54	0.49	

$F_{ST}$  values are below diagonal (all  $P$ -values  $\leq 0.001$ ) and pairwise harmonic mean  $D_{est}$  values are above diagonal.

loci. Thus, we sought to compute relative utility of each locus. We measured four parameters across the 15 microsatellite loci (Table 5). The  $PI$  ranged from 0.21 for Shae\_14 to 0.61 for Shae\_04. Five loci exhibited evidence of null alleles in one or two populations. In populations that demonstrated evidence of null alleles, null allele frequency ranged from 0.16 (Shae\_09, Mauritius) to 0.33 (Shae\_10, Senegal). No single locus estimated significant differentiation across all population pairs. The number of population pairs with an  $F_{ST}$   $P$ -value greater than 0.001 ranged from 3 (Shae\_15) to 10 (Shae\_11 and Shae\_13). The mean number of alleles across populations ranged from 3.52 (Shae\_11) to 8.24 (Shae\_08). Our usefulness scores ranged from 8 (Shae\_08, most useful) to 36 (Shae\_11, least useful) allowing reasonable discrimination among loci. Thus, if researchers wanted to score a subset of these loci, they now have a simple way to prioritize which loci to include.

#### Comparison to other studies and primers

We have developed microsatellite loci from literally hundreds of species using a variety of approaches during the past 20 years [46-48]. It is common for about half of the primer pairs we tested to yield amplifiable, easily genotyped, and polymorphic loci. It is not unusual, however, for the proportion to be substantially lower than 50%, but it is somewhat uncommon for the proportion to be substantially higher than 50%. Here, we focused on single-copy loci which are likely to have been sequenced only a single time. Because 454 sequences have an average error rate of about 1% per base, this means that about 18% ( $1-0.99^{20}$ ) of 20-base primer sequences will contain at least one error. Errors in primer sequences will be enhanced when they are at the ends of a sequence read (where quality is lowest), but the low-quality bases are mostly mitigated by matching the low-coverage *S. haematobium* 454 sequences to high-

**Table 5 Summary statistics of 15 microsatellite loci screened in 6 populations of *Schistosoma haematobium***

Locus	$PI$	Populations with null alleles	Pairwise $F_{ST}$ with $p > 0.001$	$A$	Score	Rank of usefulness
Shae_01	0.22	0	4	6.9	9	2
Shae_02	0.37	2	7	6.4	23	8
Shae_03	0.30	0	6	7.6	12	3
Shae_04	0.25	0	4	7.0	9	2
Shae_05	0.36	0	3	6.8	15	6
Shae_06	0.42	0	4	5.6	22	7
Shae_07	0.44	1	8	4.5	32	12
Shae_08	0.28	0	4	8.2	8	1
Shae_09	0.34	2	5	6.8	16	5
Shae_10	0.36	2	7	4.7	27	10
Shae_11	0.49	0	10	3.5	36	14
Shae_12	0.61	1	7	4.5	35	13
Shae_13	0.43	0	10	5.4	29	11
Shae_14	0.21	0	5	6.3	13	4
Shae_15	0.59	0	3	5.4	27	9

$PI$  is the probability of identity, the number of populations with expected null alleles present, the number of populations with non-significant ( $p > 0.001$ )  $F_{ST}$  values (significance determined by G-based exact test),  $A$  is the mean number of alleles, Score is determined from rank-sum of desirable characteristics (e.g., allelic diversity, lack of predicted null alleles, etc.; see text for details), Rank of Usefulness is the rank order for loci based on Score (lowest Score and rank is best), loci with the same rank indicate loci with identical rank sums.

coverage *S. mansoni* genomic data. Indeed, most primers we design typically amplify (~75%), but it is well-known that the proportion of variable loci varies greatly among taxa and that mutation rates vary among loci and is correlated with allele length [49]. We focused on tetranucleotide repeats because they are generally easy to genotype [50]. Tetranucleotide repeats also have the advantage of having the lowest mutation rate [51] and thus the lowest level of homoplasmy.

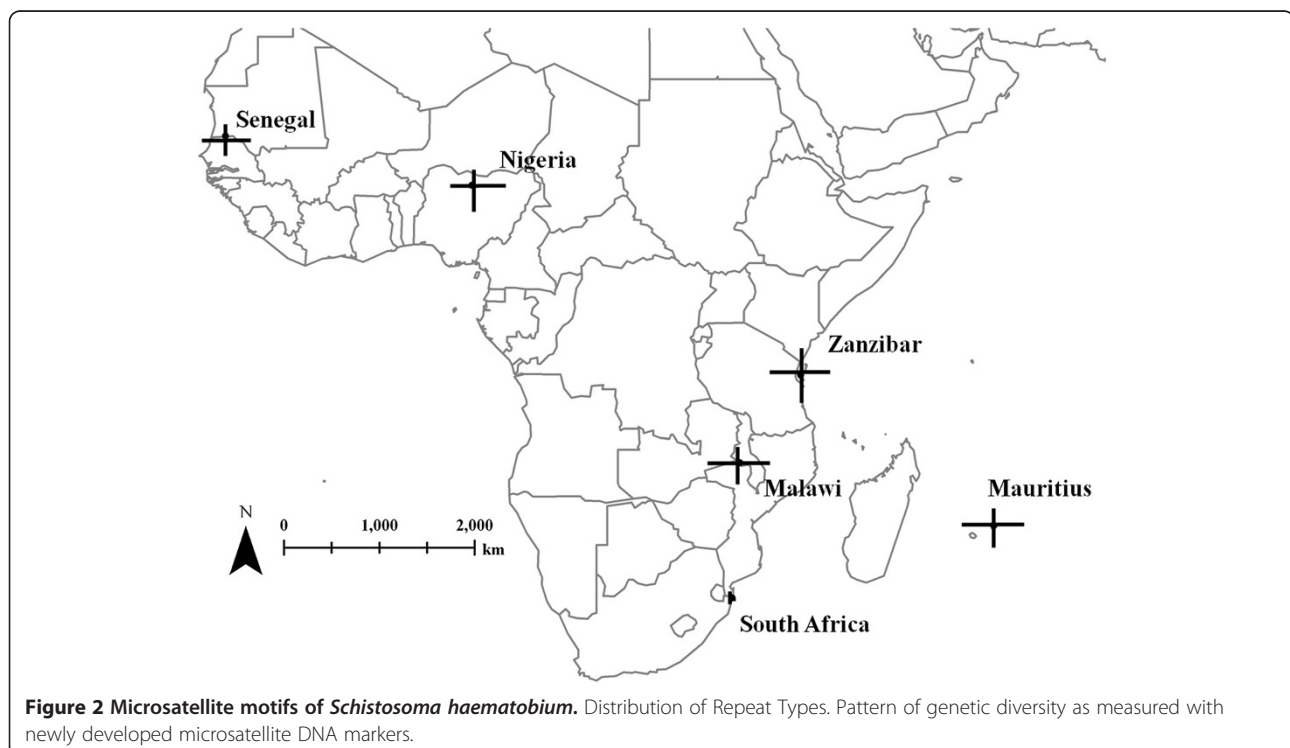
We developed a customized pipeline to design primers and identify primer pairs from regions of interest. This pipeline builds on the easily implemented MSATCOMMANDER [14] program, but includes customization to help speed searches on genome-scale data and maintains the output in an SQL database. We did not attempt multiple PCR conditions that could optimize the amplification of each locus. Instead, we focused on applying a small number of broadly useful PCR conditions on a moderate number of primer pairs. This strategy has the advantage of quickly focusing on primers that are likely to work well in multiplexes. It also provides a realistic assessment of the proportion of loci that are likely to work under normal lab conditions, rather than the largest possible proportion that could ever be made to work.

We have only tested 32 of the many thousands of primer pairs in our databases. If researchers need additional loci to address health-care challenges posed

by urogenital schistosomiasis [52], we recommend investigating additional primers in the list of 403 loci mapped to *S. mansoni* scaffolds (Additional file 3: Table S3 *cf.* Additional file 1: Table S1) as the most productive avenue.

## Conclusion

The highly variable DNA markers we have developed can be used to investigate the genetic epidemiology of *S. haematobium* within both definitive mammalian (worms, eggs and miracidia) and intermediate snail hosts (cercariae) from widespread geographical locations. These markers demonstrate that *S. haematobium* from five of the sampling locations are genetically diverse, whereas *S. haematobium* from South Africa has much lower diversity (Figure 2). *Schistosoma haematobium* from Zanzibar had the highest levels of genetic diversity, complementing the differences in mtDNA diversity found within and between *S. haematobium* populations from across mainland Africa and the Indian Ocean Islands [53,54]. An elimination programme is now ongoing in Zanzibar, and it will be interesting to see how the strong selection pressures imposed on parasite populations by praziquantel treatments impacts this diversity [55]. The sweep of markers in the panel of loci identified provides a novel microsatellite panel with the potential to be used to identify and track genetic determinants of drug resistance in *S. haematobium*. Thus, these markers are a valuable resource to SCORE and the wider community of researchers and healthcare professionals researching



with an ultimate goal to eliminate urogenital schistosomiasis. Primers for microsatellite loci, their location within the genome and a BLAST server are available at: <http://www.cebio.org/projetos/schistosoma-haematobium-genome>.

## Additional files

**Additional file 1: Table S1.** All 32 primer pairs screened for amplification, variation, and scorability are summarized in this excel workbook.

**Additional file 2: Table S2.** Counts of microsatellite motifs found in three species of *Schistosoma* (*S. haematobium*, *S. japonicum*, and *S. mansoni*) are summarized in this excel workbook.

**Additional file 3: Table S3.** All 403 primer pairs for *S. haematobium* that match to a single *S. mansoni* scaffold.

**Additional file 4: Table S4.** Genotypes of the 72 *S. haematobium* samples used in this study, the reduced set of 69 analyzed, and output from population differentiation measures obtained from GenAlEx are given in this excel workbook.

## Competing interests

The authors declare no competing interests.

## Authors' contributions

TCG, DR, SLL, GO and BCF designed the study; DR, BLW and AE conducted all sampling, husbandry, and DNA extractions; TCG and GGF staff conducted 454 sequencing; BCF designed primers tested; AZN and BCF conducted additional bioinformatics analyses; SLL genotyped all samples and AMM conducted microsatellite survey analyses. All authors wrote, read and approved the final manuscript.

## Authors' information

TCG, SLL, AMM and BCF use and develop a variety of DNA tools, and have collaborated on a variety of microsatellite-based population genetic projects. DR, AE and BLW use molecular tools to study the biology and control of schistosomiasis. AZ and GO use bioinformatics tools and develop public databases to combat schistosomiasis.

## Acknowledgements

All researchers are grateful for the sub-awards (no. RR374-053/0785426) from the University of Georgia Research Foundation, which is awarded by the Bill & Melinda Gates Foundation (prime award no. 50816). Moreover they are particularly indebted to all members of the SCORE secretariat for valuable advice and input. We thank the Ministry of Health Zanzibar for collaboration and help with the isolation of parasites. We also thank the staff of the Georgia Genomics Facility for 454 DNA sequencing services. Manuscript preparation was partially supported by the DOE under Award Number DE-FC09-07SR22506 to the University of Georgia Research Foundation. The authors would like to thank everyone that was involved in any of the field and NHM SCAN collections of the samples used in this study. We also thank Mike Anderson and Jayne King for their work in maintaining samples in the laboratory.

## Author details

<sup>1</sup>Department of Environmental Health Science, University of Georgia, Athens 30602 GA, USA. <sup>2</sup>Savannah River Ecology Laboratory, University of Georgia, Drawer E, Aiken 29802 SC, USA. <sup>3</sup>Warnell School of Forestry and Natural Resources, University of Georgia, Athens 30602 GA, USA. <sup>4</sup>Department of Life Sciences, Natural History Museum, Wolfson Wellcome Biomedical Laboratories, Cromwell Road, London SW7 5BD, UK. <sup>5</sup>Rene Rachou Research Center, National Institute of Science and Technology in Tropical Diseases, Oswaldo Cruz Foundation, Av. Augusto de Lima 1715, Barro Preto, Belo Horizonte CEP 30190-002 MG, Brazil. <sup>6</sup>Department of Ecology and Evolutionary Biology, University of California, Los Angeles 90095 CA, USA. <sup>7</sup>Present address: Embrapa Agricultural Informatics, Av. Andre Tosello, 209, Campinas 13083-886 SP, Brazil. <sup>8</sup>Present address; Department of Infectious

Disease Epidemiology, Imperial College Faculty of Medicine (St Mary's Campus), Norfolk Place, London W2 1PG, UK.

Received: 5 April 2013 Accepted: 18 September 2013  
Published: 17 October 2013

## References

- Steinmann P, Keiser J, Bos R, Tanner M, Utzinger J: **Schistosomiasis and water resources development: systematic review, meta-analysis, and estimates of people at risk.** *Lancet Infect Dis* 2006, **6**:411–425.
- van der Werf MJ, De Vlas SJ, Brooker S, Looman CWN, Nagelkerke NJD, Habbema JDF, Engels D: **Quantification of clinical morbidity associated with schistosome infection in sub-Saharan Africa.** *Acta Trop* 2003, **86**:125–139.
- Gower C, Gabrielli A, Sacko M, Dembelé R, Golan R, Emery A, Rollinson D, Webster J: **Population genetics of *Schistosoma haematobium*: development of novel microsatellite markers and their application to schistosomiasis control in Mali.** *Parasitology* 2011, **138**:978–994.
- Rollinson D: **A wake up call for urinary schistosomiasis: reconciling research effort with public health importance.** *Parasitology* 2009, **136**:1593.
- Fenwick A, Rollinson D, Southgate V: **Implementation of human schistosomiasis control: challenges and prospects.** *Adv Parasitol* 2006, **61**:567–622.
- Doenhoff M, Hagan P, Cioli D, Southgate V, Pica-Mattocchia L, Botros S, Coles G, Tchuem Tchuenté LA, Mbaye A, Engels D: **Praziquantel: its use in control of schistosomiasis in sub-Saharan Africa and current research needs.** *Parasitology* 2009, **136**:1825–1835.
- Berriman M, Haas BJ, LoVerde PT, Wilson RA, Dillon GP, Cerqueira GC, Mashiyama ST, Al-Lazikani B, Andrade LF, Ashton PD, MA Aslett, Bartholomeu DC, Blandin G, Caffrey CR, Coghlan A, Coulson R, Day TA, Delcher A, DeMarco R, Djikeng A, Eyre T, Gamble JA, Ghedin E, Gu Y, Hertz-Fowler C, Hirai H, Hirai Y, Houston R, Ivans A, Johnston DA, et al: **The genome of the blood fluke *Schistosoma mansoni*.** *Nature* 2009, **460**:352–358.
- Zhou Y, Zheng H, Chen Y, Zhang L, Wang K, Guo J, Huang Z, Zhang B, Huang W, Jin K, Dou T, Hasegawa M, Wang L, Zhang Y, Zhou J, Tao L, Cao Z, Li Y, Vinar T, Brejova B, Brown D, Li M, Miller D, Blair D, Zhong Y, Liu F, Hu W, Wang Z, Song H, Chen S, et al: **The *Schistosoma japonicum* genome reveals features of host-parasite interplay.** *Nature* 2009, **460**:345–351.
- Young ND, Jex AR, Li B, Liu S, Yang L, Xiong Z, Li Y, Cantacessi C, Hall RS, Xu X: **Whole-genome sequence of *Schistosoma haematobium*.** *Nature Genet* 2012, **44**:221–225.
- Tautz D: **Hypervariability of simple sequences as a general source for polymorphic DNA markers.** *Nucl Acids Res* 1989, **17**:6463–6471.
- Rollinson D, Webster JP, Webster B, Nyakaana S, Jorgensen A, Stothard JR: **Genetic diversity of schistosomes and snails: implications for control.** *Parasitology* 2009, **136**:1801–1811.
- Gower C, Gabrielli A, Sacko M, Dembelé R, Golan R, Emery A, Rollinson D, Webster J: **Population genetics of *Schistosoma haematobium*: development of novel microsatellite markers and their application to schistosomiasis control in Mali – CORRIGENDUM.** *Parasitology* 2012, **139**:962.
- Emery AM, Allan FE, Rabone ME, Rollinson D: **Schistosomiasis collection at NHM (SCAN).** *Parasit Vectors* 2012, **5**:185.
- Faircloth BC: **MSATCOMMANDER: detection of microsatellite repeat arrays and automated, locus-specific primer design.** *Mol Ecol Resour* 2008, **8**:92–94.
- Rumble SM, Lacroute P, Dalca AV, Fiume M, Sidow A, Brudno M: **SHRIMP: accurate mapping of short color-space reads.** *PLoS Comp Biol* 2009, **5**:e1000386.
- Li H, Durbin R: **Fast and accurate short read alignment with Burrows-Wheeler transform.** *Bioinformatics* 2009, **25**:1754–1760.
- Rozen S, Skaletsky H: **Primer3 on the WWW for general users and for biologist programmers.** *Meth Mol Biol* 2000, **132**:365–386.
- Don R, Cox P, Wainwright B, Baker K, Mattick J: **'Touchdown' PCR to circumvent spurious priming during gene amplification.** *Nucl Acids Res* 1991, **19**:4008.
- DeWoody JA, Schupp J, Kenefic L, Busch J, Murfitt L, Keim P: **Universal method for producing ROX-labeled size standards suitable for automated genotyping.** *Biotechniques* 2004, **37**:348–352.
- Park SDE: **The Excel Microsatellite Toolkit.** In *Trypanotolerance in West African Cattle and the Population Genetic Effects of Selection*. University of Dublin, Dublin, Ireland: Ph.D. Thesis; 2001.

21. Raymond M, Rousset F: **GENEPOP (version 1.2): population genetics software for exact tests and ecumenicism.** *J Hered* 1995, **86**:248–249.
22. Rousset F: **GENEPOP'007: a complete re-implementation of the GENEPOP software for Windows and Linux.** *Mol Ecol Resour* 2008, **8**:103–106.
23. Weir B, Cockerham CC: **Estimating F-statistics for the analysis of population structure.** *Evolution* 1984, **38**:1358–1370.
24. Peakall R, Smouse PE: **GENALEX 6: genetic analysis in Excel. Population genetic software for teaching and research.** *Mol Ecol Notes* 2005, **6**:288–295.
25. Balloux F, Brunner H, Lugon-Moulin N, Hausser J, Goudet J: **Microsatellites can be misleading: an empirical and simulation study.** *Evolution* 2000, **54**:1414–1422.
26. Hedrick PW: **Perspective: highly variable loci and their interpretation in evolution and conservation.** *Evolution* 1999, **53**:313–318.
27. Slatkin M: **A measure of population subdivision based on microsatellite allele frequencies.** *Genetics* 1995, **139**:457–462.
28. Gaggiotti O, Lange O, Rassmann K, Gliddon C: **A comparison of two indirect methods for estimating average levels of gene flow using microsatellite data.** *Mol Ecol* 2002, **8**:1513–1520.
29. Jost LOU: **GST and its relatives do not measure differentiation.** *Mol Ecol* 2008, **17**:4015–4026.
30. Crawford NG: **SMOGD: software for the measurement of genetic diversity.** *Mol Ecol Resour* 2009, **10**:556–557.
31. Van Oosterhout C, Hutchinson WF, Wills DPM, Shipley P: **Micro-checker: software for identifying and correcting genotyping errors in microsatellite data.** *Mol Ecol Notes* 2004, **4**:535–538.
32. Brookfield J: **A simple new method for estimating null allele frequency from heterozygote deficiency.** *Mol Ecol* 1996, **5**:453–455.
33. Dieringer D, Schlötterer C: **Microsatellite analyser (MSA): a platform independent analysis tool for large microsatellite data sets.** *Mol Ecol Notes* 2003, **3**:167–169.
34. Zerlotini A, Aguiar ER, Yu F, Xu H, Li Y, Young ND, Gasser RB, Protasio AV, Berriman M, Roos DS: **SchistoDB: an updated genome resource for the three key schistosomes of humans.** *Nucl Acids Res* 2013, **41**:D728–D731.
35. Glenn TC: **Field guide to next-generation DNA sequencers.** *Mol Ecol Resour* 2011, **11**:759–769.
36. Claesson MJ, Wang Q, O'Sullivan O, Greene-Diniz R, Cole JR, Ross RP, O'Toole PW: **Comparison of two next-generation sequencing technologies for resolving highly complex microbiota composition using tandem variable 16S rRNA gene regions.** *Nucl Acids Res* 2010, **38**:e200–e200.
37. Loman NJ, Misra RV, Dallman TJ, Constantinidou C, Gharbia SE, Wain J, Pallen MJ: **Performance comparison of benchtop high-throughput sequencing platforms.** *Nature Biotech* 2012, **30**:434–439.
38. Luo C, Tsementzi D, Kyrpides N, Read T, Konstantinidis KT: **Direct comparisons of Illumina vs. Roche 454 sequencing technologies on the same microbial community DNA sample.** *PLoS One* 2012, **7**:e30087.
39. Mitreva M: **The genome of a blood fluke associated with human cancer.** *Nature Genet* 2012, **44**:116–118.
40. Hauswaldt JS, Glenn TC: **Microsatellite DNA loci from the Diamondback terrapin (*Malaclemys terrapin*).** *Mol Ecol Notes* 2003, **3**:174–176.
41. Steinauer ML, Blouin MS, Criscione CD: **Applying evolutionary genetics to schistosome epidemiology.** *Infect Genet Evol* 2010, **10**:433–443.
42. Abbasi I, Hamburger J, Kariuki C, Mungai PL, Muchiri EM, King CH: **Differentiating *Schistosoma haematobium* from Related Animal Schistosomes by PCR Amplifying Inter-Repeat Sequences Flanking Newly Selected Repeated Sequences.** *Am J Trop Med Hyg* 2012, **87**:1059–1064.
43. Zhao G-H, Li J, Blair D, Li X-Y, Elsheikha HM, Lin R-Q, Zou F-C, Zhu X-Q: **Biotechnological advances in the diagnosis, species differentiation and phylogenetic analysis of *Schistosoma* spp.** *Biotech Adv* 2012, **30**:1381–1389.
44. Valentim CLL, LoVerde PT, Anderson TJC, Criscione CD: **Efficient genotyping of *Schistosoma mansoni* miracidia following whole genome amplification.** *Mol Biochem Parasitol* 2009, **166**:81–84.
45. Gower CM, Gouvras AN, Lambertson PHL, Deol A, Shrivastava J, Mutombo PN, Mbuh JV, Norton AJ, Webster BL, Stothard JR, et al: **Population genetic structure of *Schistosoma mansoni* and *Schistosoma haematobium* from across six sub-Saharan African countries: Implications for epidemiology, evolution and control.** *Acta Trop* 2012. doi: 10.1016/j.actatropica.2012.09.014.
46. Glenn TC, Schable NA: **Isolating microsatellite DNA loci.** *Meth Enzymol* 2005, **395**:202–222.
47. Weber JN, Peters MB, Tsyusko OV, Linnen CR, Hagen C, Schable NA, Tuberville TD, McKee AM, Lance SL, Jones KL: **Five hundred microsatellite loci for *Peromyscus*.** *Cons Genet* 2010, **11**:1243–1246.
48. Glenn TC, Stephan W, Dessauer HC, Braun MJ: **Allelic diversity in alligator microsatellite loci is negatively correlated with GC content of flanking sequences and evolutionary conservation of PCR amplifiability.** *Mol Biol Evol* 1996, **13**:1151–1154.
49. Ellegren H: **Microsatellite mutations in the germline: implications for evolutionary inference.** *Trends Genet* 2000, **16**:551–558.
50. Sheffield VC, Weber JL, Buetow KH, Murray JC, Even DA, Wiles K, Gastier JM, Pulido JC, Yandava C, Sunden SL: **A collection of tri- and tetranucleotide repeat markers used to generate high quality, high resolution human genome-wide linkage maps.** *Hum Mol Genet* 1995, **4**:1837–1844.
51. Chakraborty R, Kimmel M, Stivers DN, Davison LJ, Deka R: **Relative mutation rates at di-, tri-, and tetranucleotide microsatellite loci.** *Proc Natl Acad Sci U S A* 1997, **94**:1041–1046.
52. Brindley PJ, Hotez PJ: **Break Out: Urogenital Schistosomiasis and *Schistosoma haematobium* Infection in the Post-Genomic Era.** *PLoS Negl Trop Dis* 2013, **7**:e1961.
53. Webster BL, Culverwell CL, Khamis I, Mohammed KA, Rollinson D, Stothard JR: **DNA barcoding of *Schistosoma haematobium* on Zanzibar reveals substantial genetic diversity and two major phylogenetic groups.** *Acta Trop* 2012. doi: 10.1016/j.actatropica.2012.06.002.
54. Webster BL, Emery AM, Webster JP, Gouvras A, Garba A, Diaw O, Seye MM, Tchuente LAT, Simoonga C, Mwanga J: **Genetic Diversity within *Schistosoma haematobium*: DNA Barcoding Reveals Two Distinct Groups.** *PLoS Negl Trop Dis* 2012, **6**:e1882.
55. Knopp S, Mohammed KA, Ali SM, Khamis IS, Ame SM, Albonico M, Gouvras A, Fenwick A, Savioli L, Colley DG: **Study and implementation of urogenital schistosomiasis elimination in Zanzibar (Unguja and Pemba islands) using an integrated multidisciplinary approach.** *BMC Public Health* 2012, **12**:930.

doi:10.1186/1756-3305-6-300

**Cite this article as:** Glenn et al.: Significant variance in genetic diversity among populations of *Schistosoma haematobium* detected using microsatellite DNA loci from a genome-wide database. *Parasites & Vectors* 2013 **6**:300.

**Submit your next manuscript to BioMed Central and take full advantage of:**

- Convenient online submission
- Thorough peer review
- No space constraints or color figure charges
- Immediate publication on acceptance
- Inclusion in PubMed, CAS, Scopus and Google Scholar
- Research which is freely available for redistribution

Submit your manuscript at  
www.biomedcentral.com/submit

